

INTERMODAL DESIGN STRATEGIES
FOR HIGH-SPEED RAILWAY
STATIONS IN SPAIN: **ALWAYS
IN MOTION**

17-18 October 2013

Jorge Bernabeu
Project Manager, IDOM, Spain
Session 2B: Station design around the world

INTERMODAL DESIGN STRATEGIES



Mr. Bernabeu - IDOM - Always in motion

17-18 October 2013

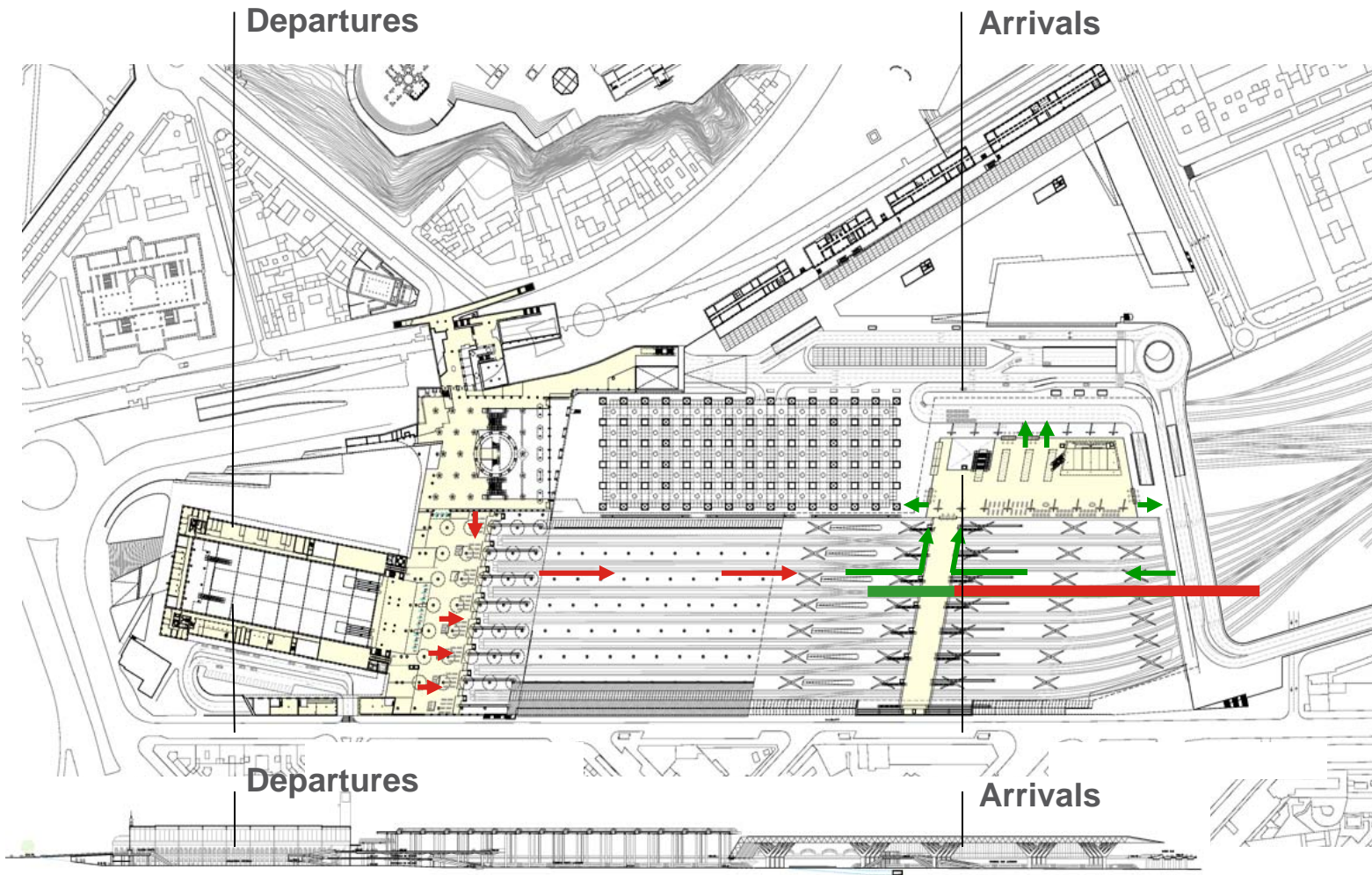


1 CONCEPTION: separate flows



New Railway Complex at Atocha Station, Madrid

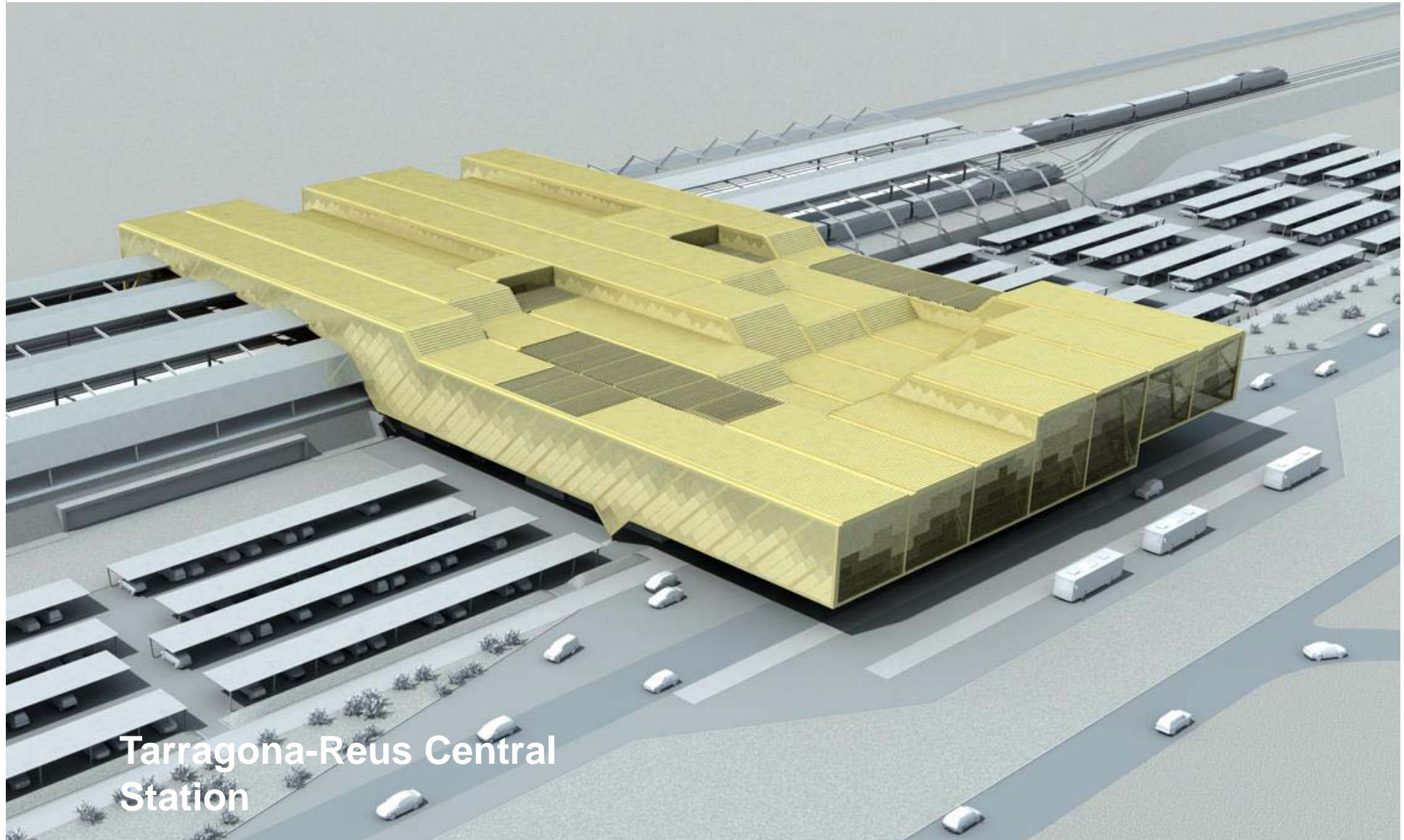
1 CONCEPTION: separate flows



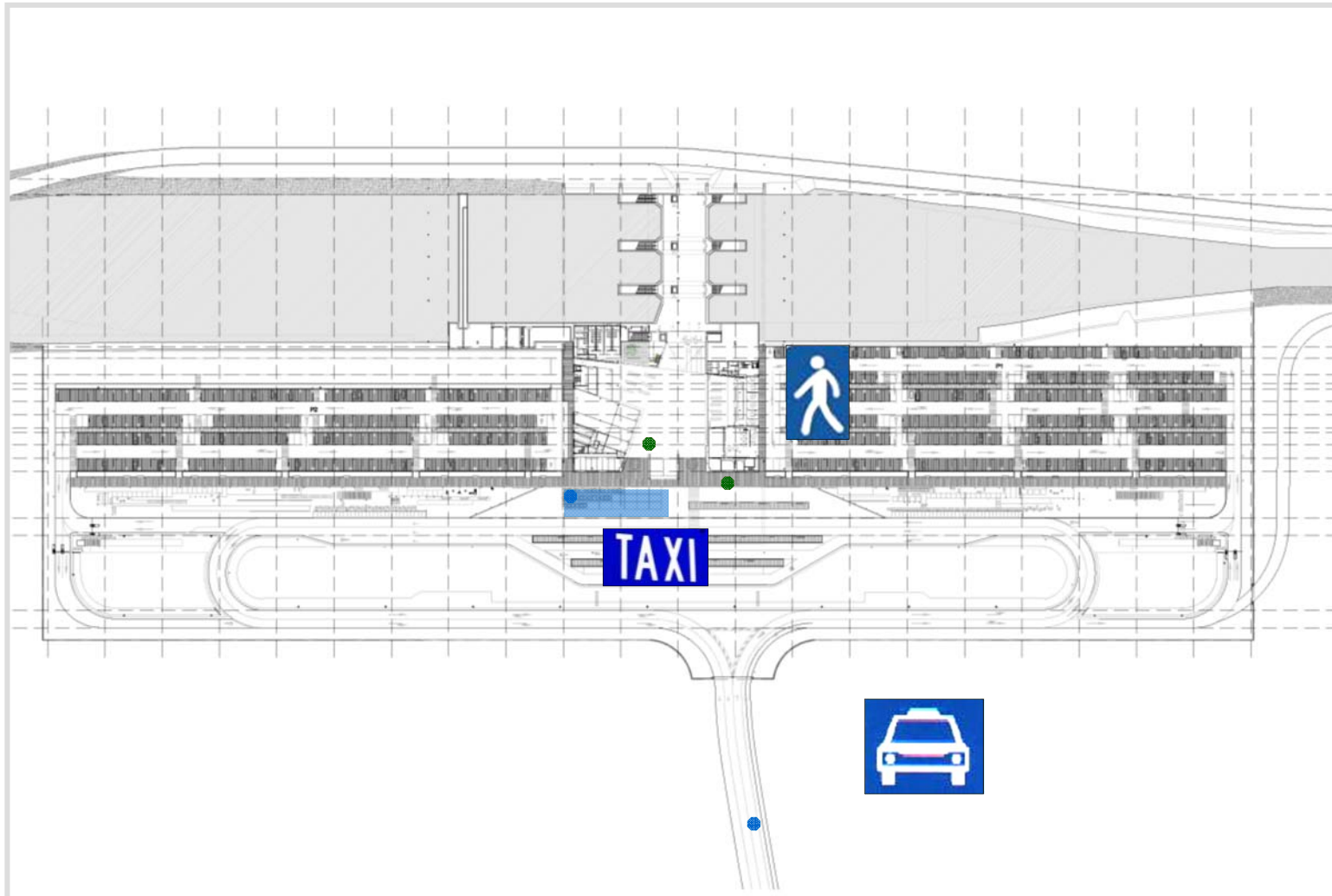
Mr. Bernabeu - IDOM - Always in motion

17-18 October 2013

2 DESIGN: follow the logic



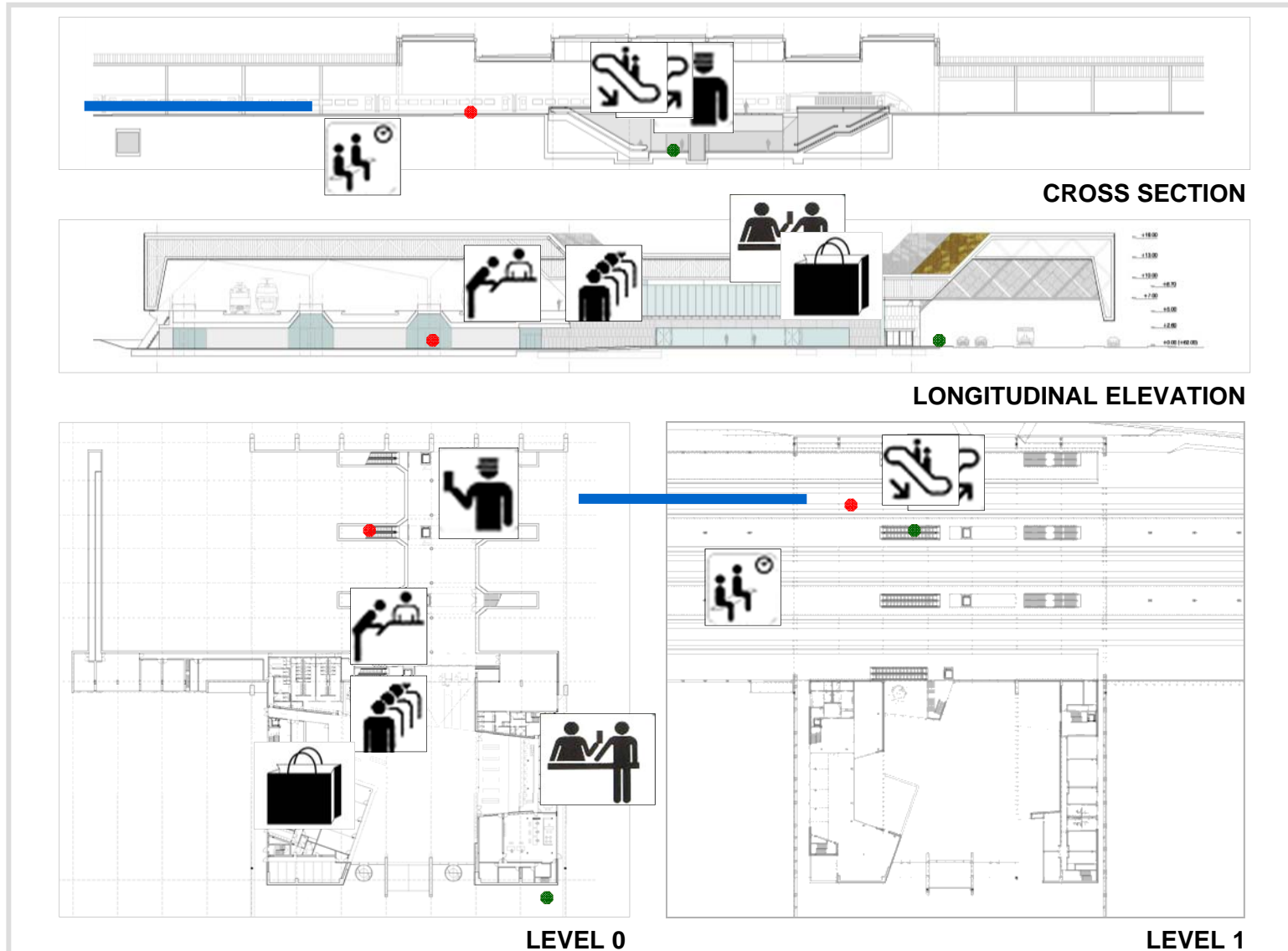
2 DESIGN: follow the logic



Mr. Bernabeu - IDOM - Always in motion

17-18 October 2013

2 DESIGN: follow the logic

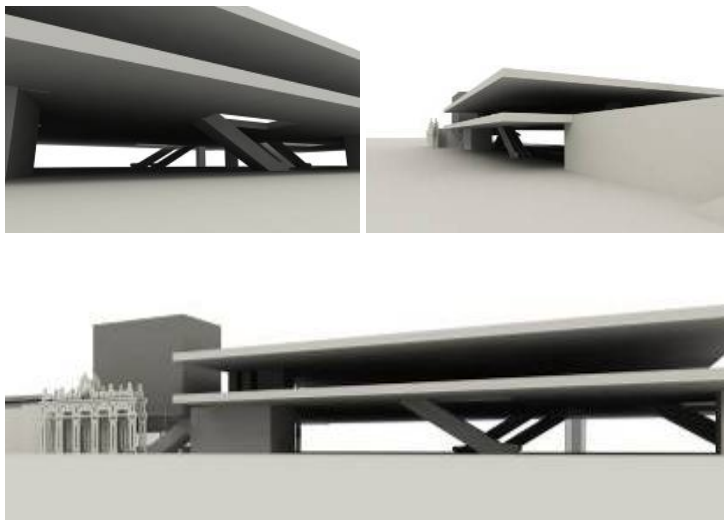


3 SPACE: open views



New North Station, San Sebastián

3 SPACE: offer open views



Mr. Bernabeu - IDOM - Always in motion

4 SIGNAGE: intuition is the best sign

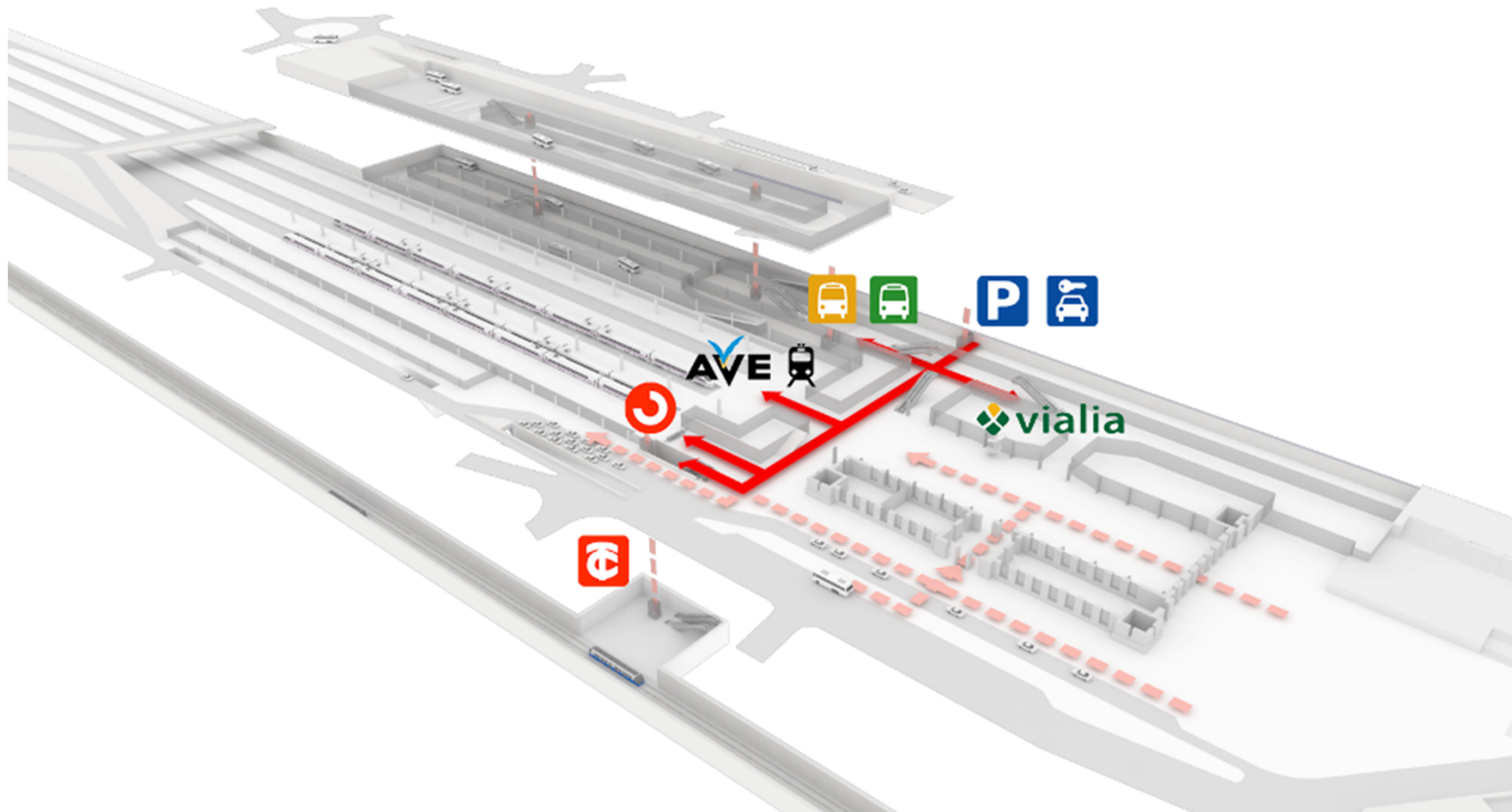


San Cristóbal Intermodal Station, A Coruña

17-18 October 2013



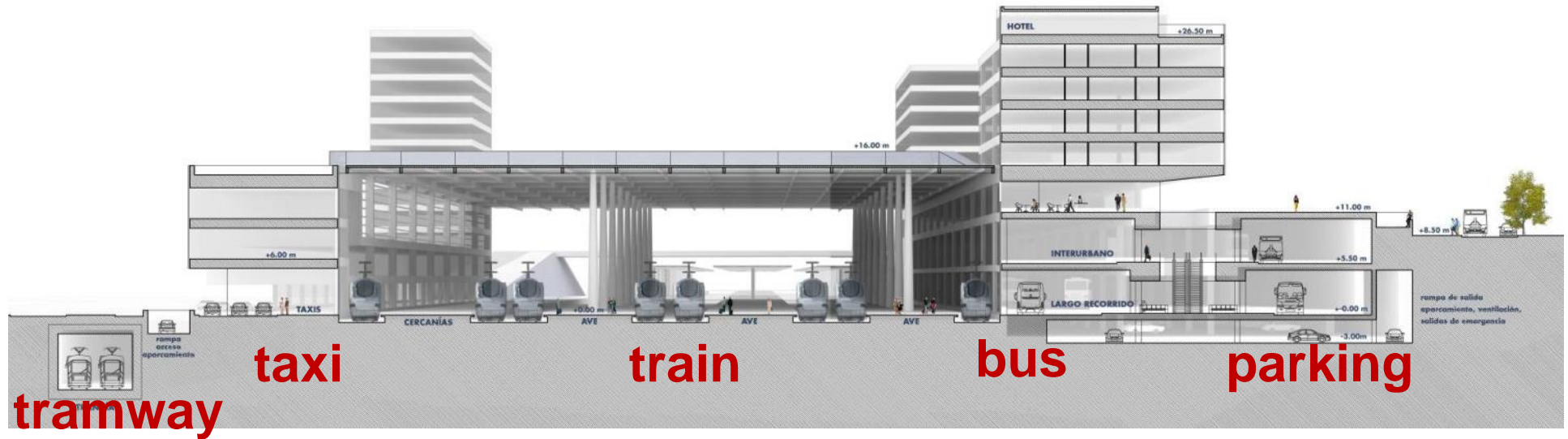
4 SIGNAGE: intuition is the best sign



Mr. Bernabeu - IDOM - Always in motion

17-18 October 2013

4 SIGNAGE: intuition is the best sign



5 CONSTRUCTION: make it easy



Joaquín Sorolla Station, Valencia

5 CONSTRUCTION: make it easy



Mr. Bernabeu - IDOM - Always in motion

17-18 October 2013



Trip never ends at the station



Always in motion

