

**nextstation**  
PARIS 2007

**December 6&7 2007**  
2<sup>nd</sup> INTERNATIONAL CONFERENCE  
ON RAILWAY STATIONS



# Tokyo Station District Development

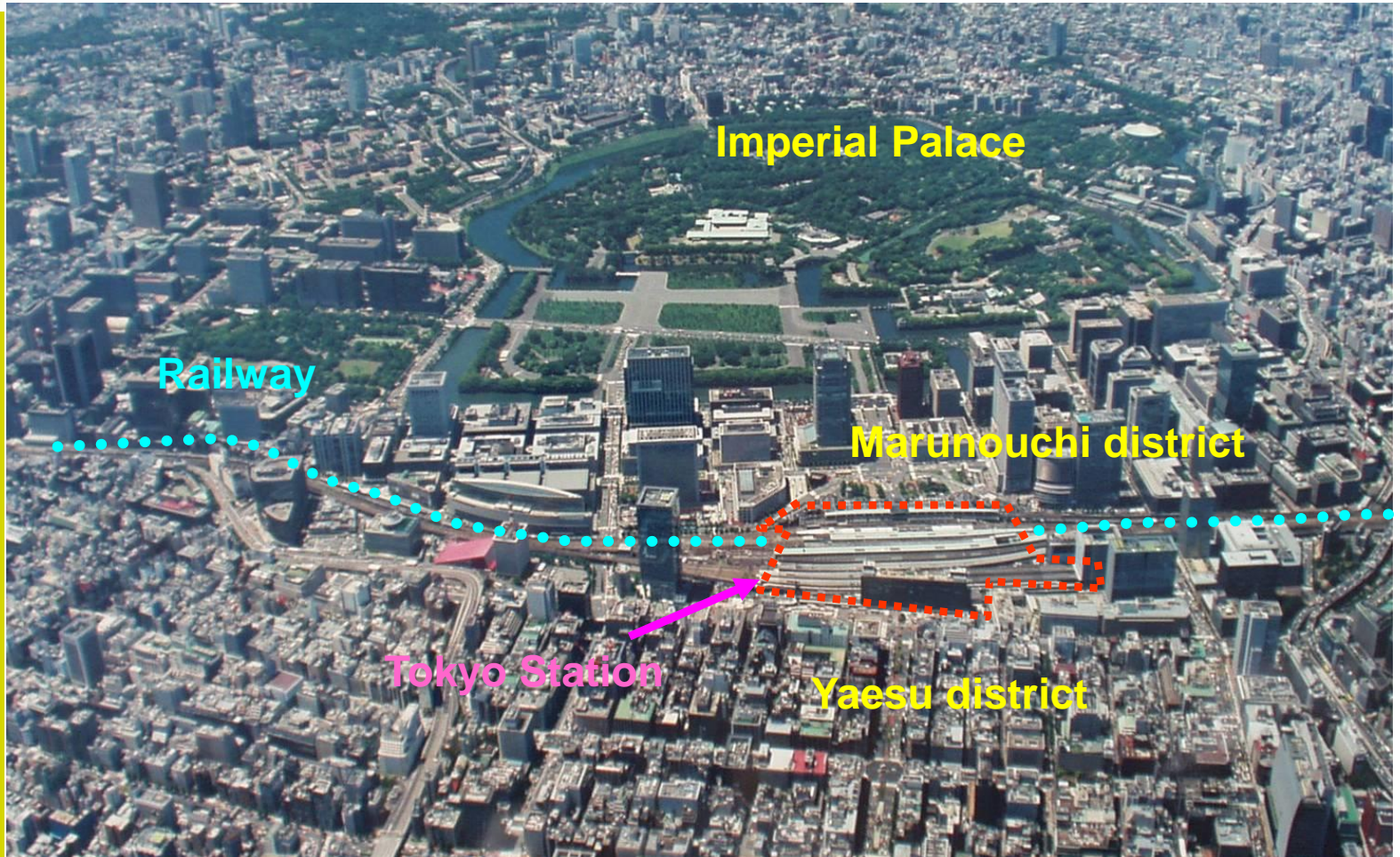
東 TOKYO STATION CITY

*Takashi Shindo*  
*East Japan Railway Company*



# 1. Tokyo Station Background

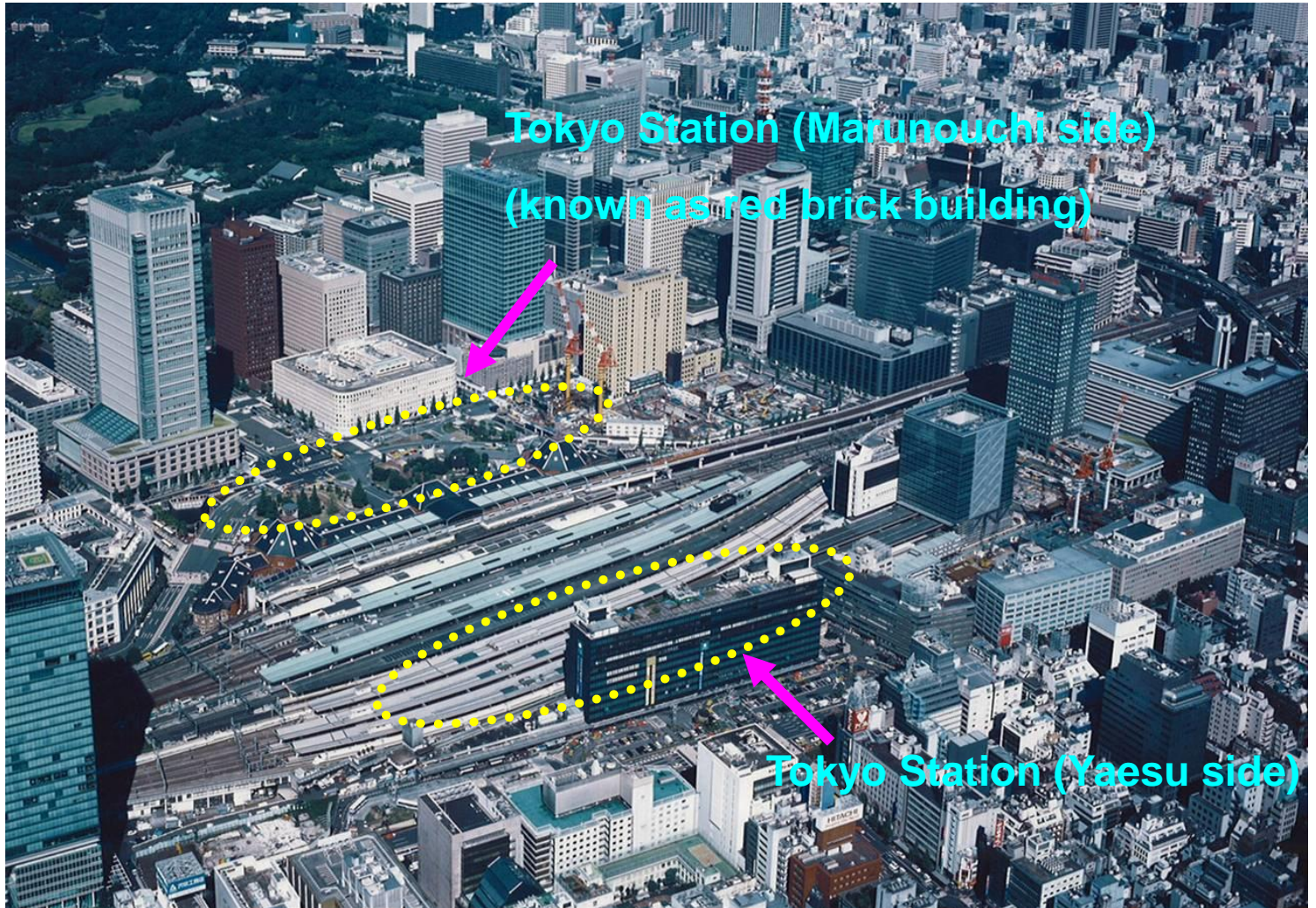
## The Environment Surrounding Tokyo Station



# 1. Tokyo Station Background

## Characteristics of the Tokyo Station Area

東京  
TOKYO STATION CITY



1. Tokyo Station Background

# Tokyo Station History



Edo Castle

Today's Tokyo Station area

Outer moat



Excavated moat stone wall



1. Tokyo Station Background

# Tokyo Station History

東

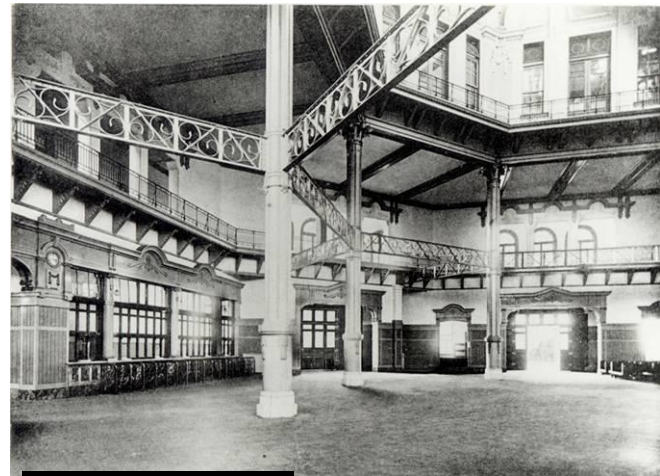
TOKYO STATION CITY



1914 The Birth of Tokyo Station



Red brick exterior appearance



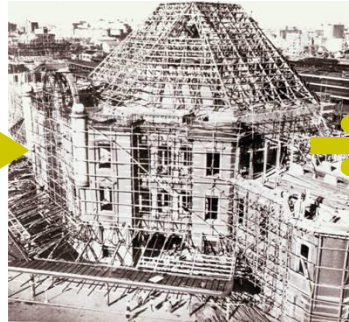
Concourse

# 1. Tokyo Station Background Marunouchi and Yaesu Sides Recent History and Future

## Marunouchi side



1945: War damage



1946: Temporary reconstruction



To date:  
This appearance remained



2012: Will be restored to original specifications

## Yaesu side



1929: 1st Yaesu station building



1948: 2nd station building



1954: 3rd and present station building



## 2. Tokyo Station City

# JR East *Station Renaissance*



Improved convenience through commercial space allocation



Service improvement



Easy-to-use ticket gates

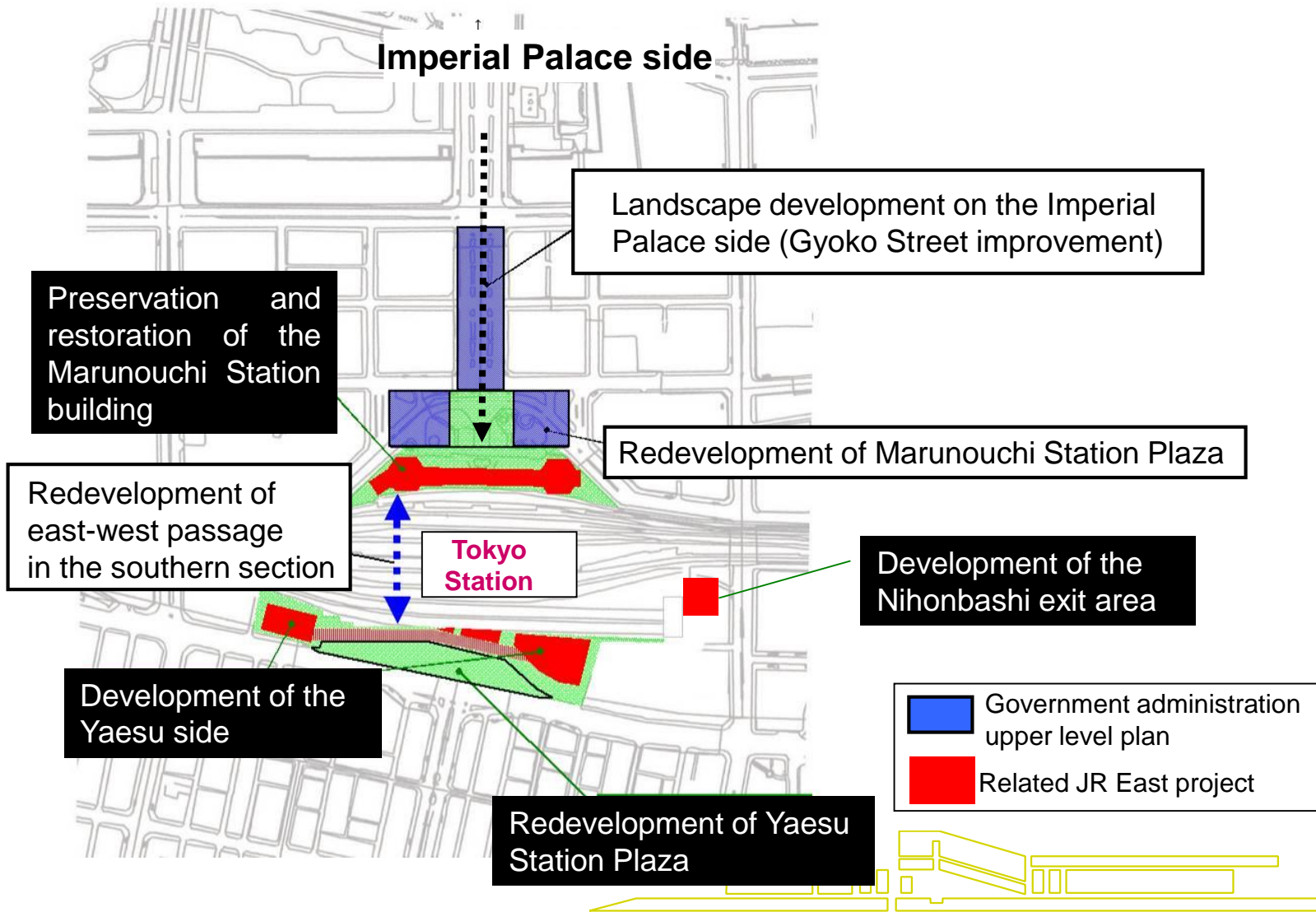


Barrier-free, etc.



## 2. Tokyo Station City


# Government Administration Upper Level Plan






**東 SAPIATOWER**

Office  
Hotel  
Conference



Conference

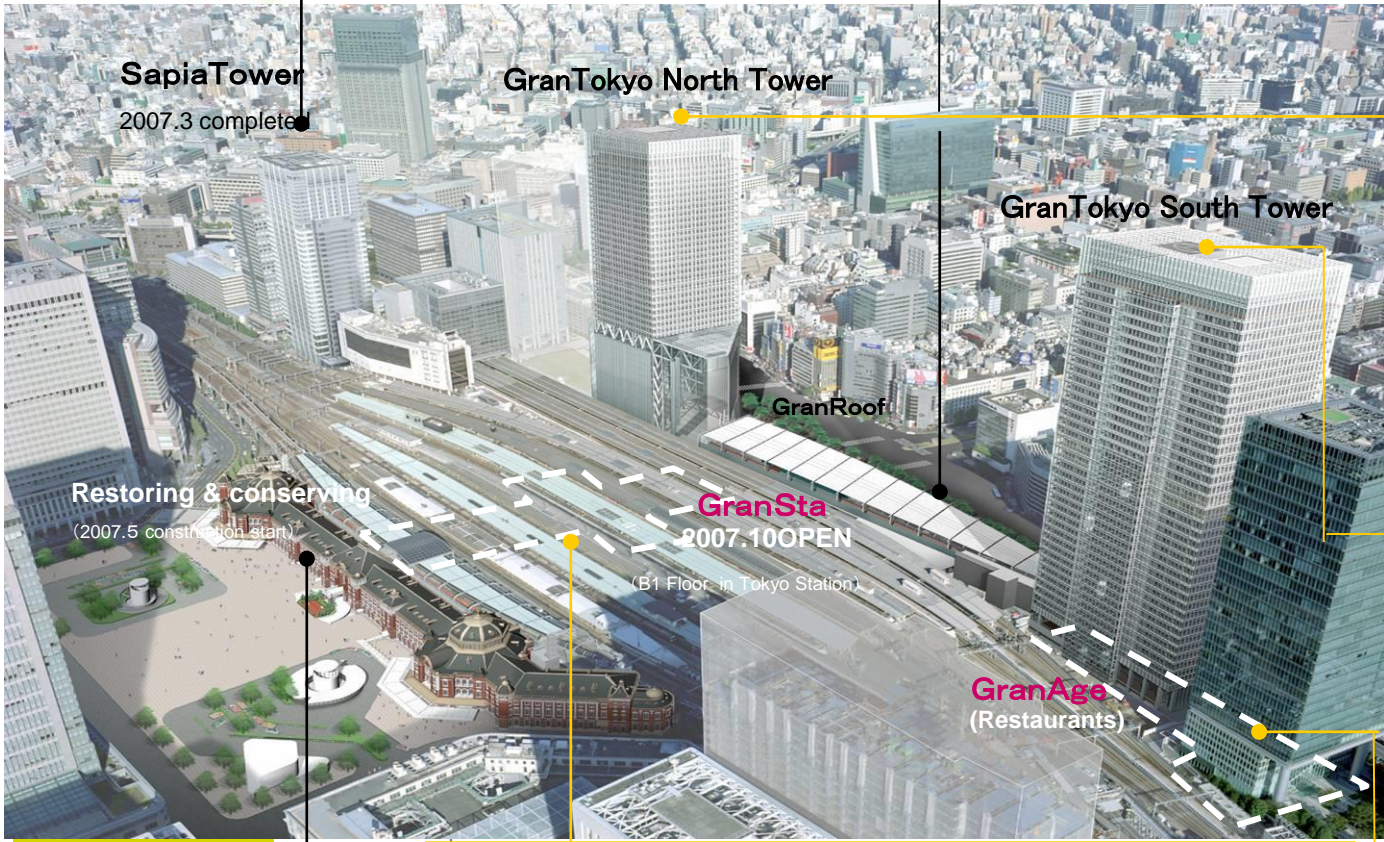


Hotel

**東 GRANROOF**



Pedestrian deck and station facilities



**SapiaTower**  
2007.3 completed

**GranTokyo North Tower**

**GranTokyo South Tower**

**GranRoof**

**Restoring & conserving**  
(2007.5 construction start)

**GranSta**  
2007.10 OPEN  
(B1 Floor in Tokyo Station)


**GranAge**  
(Restaurants)

**東 TOKYO STATION CITY GRAN TOKYO NORTH TOWER**





2007.10 completed (phase I)

**東 TOKYO STATION CITY GRAN TOKYO SOUTH TOWER**



2007.10 completed

**GranAge**  
Tokyo Station City



**Restore and Conserve**



today




completed

**東 TOKYO STATION CITY GRANSTA**

shops



2007.10 OPEN



## Ideal Concept for Tokyo Station

### View of Tokyo station

- Total; A representative entrance to Japan
- Marunouchi side: A historical and traditional gateway
- Yaesu side: A gateway to the future

### Concept of Development

#### ▪ Symbolic gateway

Construct a symbolic gateway for the Yaesu side  
A foundation for development in neighboring districts

#### ▪ Access

A more accessible system of pedestrian passageways

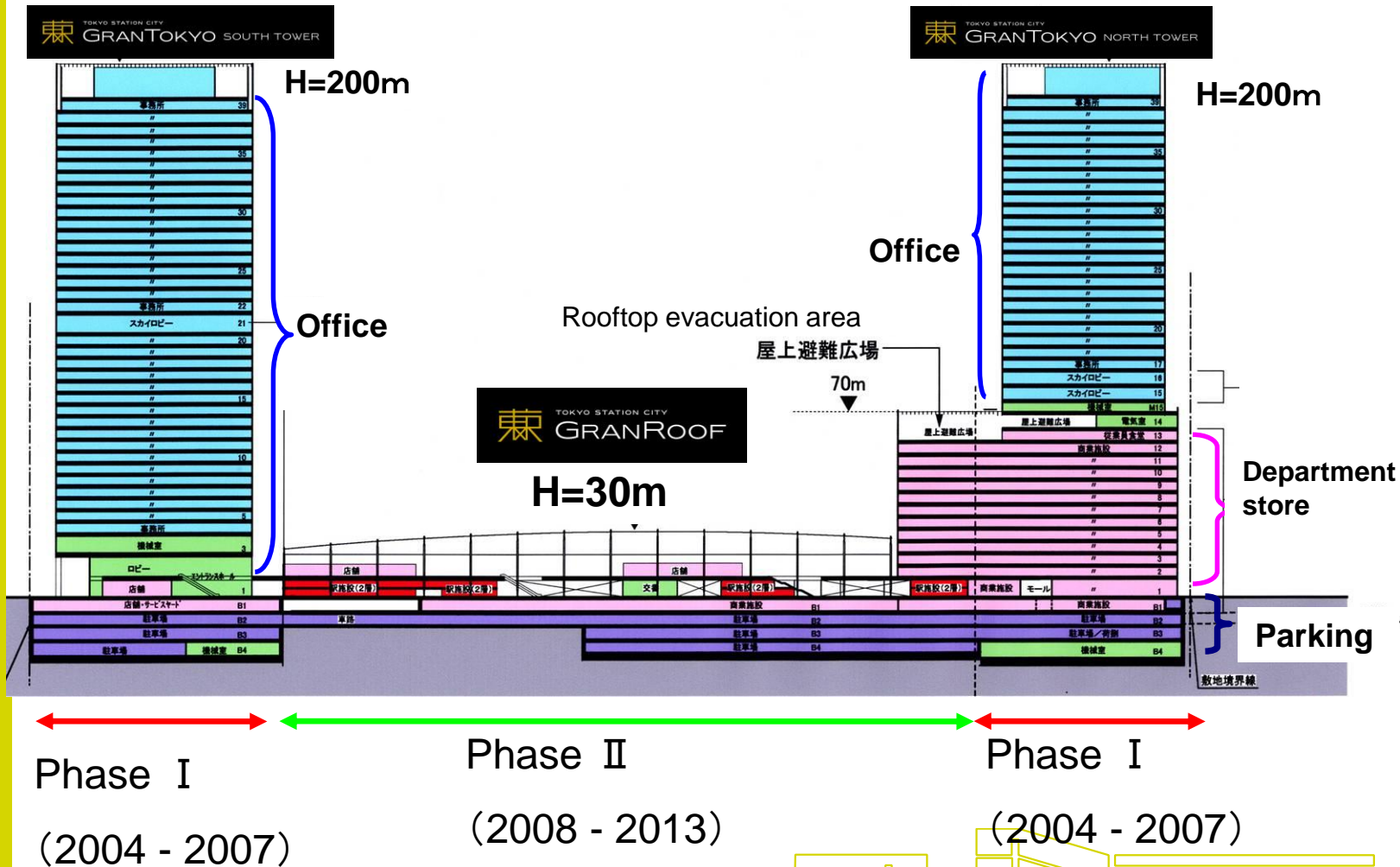
#### ▪ Landscape and environment

New urban landscape  
Attention to the environment



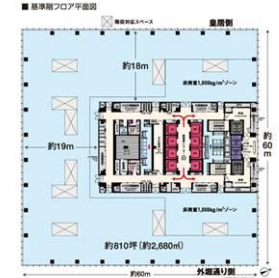
### 3. Yaesu Side Development

# Development Outline

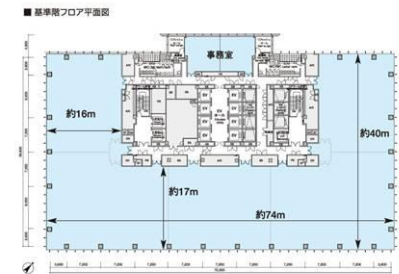


### 3. Yaesu Side Development

# Phase I Construction Completion



North Tower (Office plan)



South Tower (Office plan)



Lighting

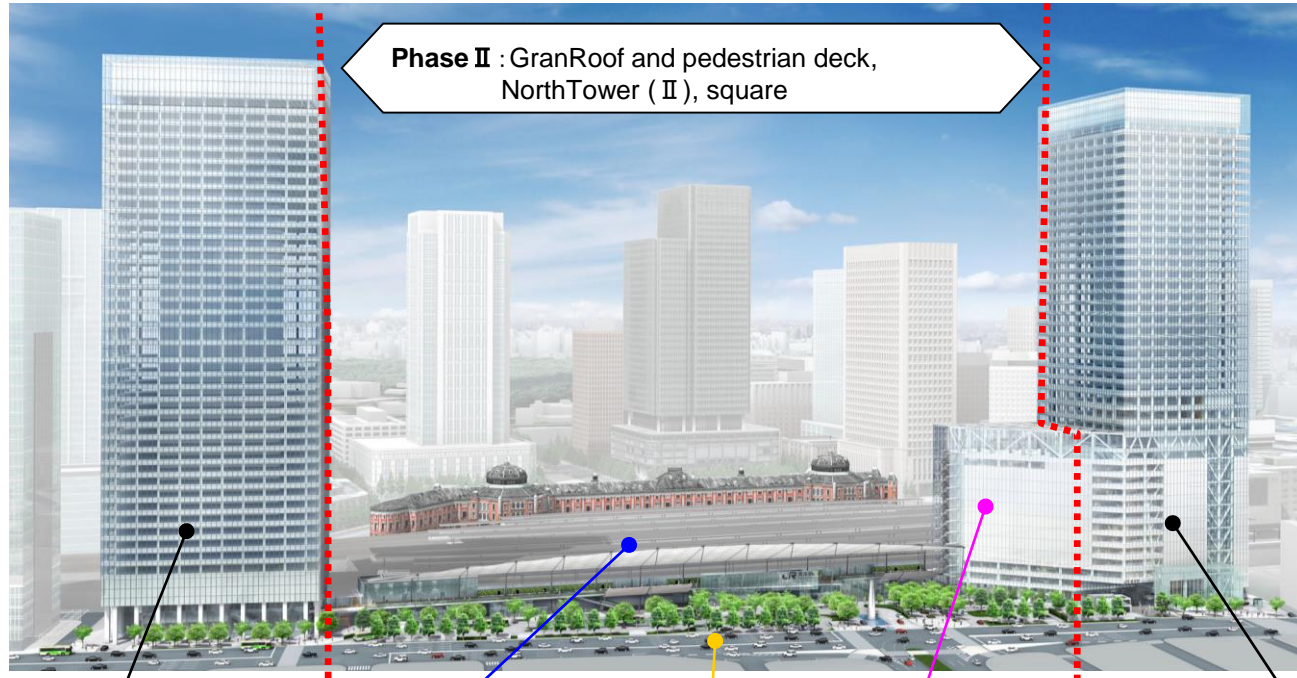


North Tower Department Store



### 3. Yaesu Side Development

# Phase II Plan

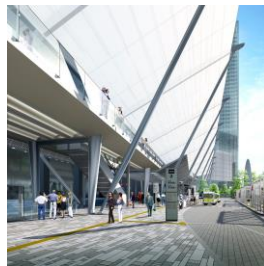


**Phase II** : GranRoof and pedestrian deck,  
NorthTower ( II ), square

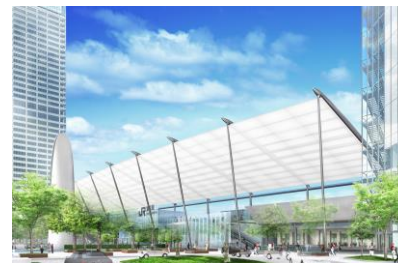
- South Tower (phase I ) (2007.10 completed)
- GranRoof (2013 completed)
- Square (2013 completed)
- NorthTower (phase II ) (2012 completed)
- North Tower (phase I ) (2007.10 completed)



PedestrianDeck (connecting North and South)



Station (Ground floor level)



GranRoof and station square



nextstation  
PARIS 2007

December 6&7 2007  
2<sup>nd</sup> INTERNATIONAL CONFERENCE  
ON RAILWAY STATIONS

東京

TOKYO STATION CITY

