



BARRIER-FREE ENVIRONMENT IN PASSENGER STATIONS

17-18 October 2013

Ekaterina SAPSAY

Head of the department of assistance to the people with reduced mobility, Passenger stations directorate
a JSC "Russian Railways" branch, Russia

Session 4B- Connecting stations with the city

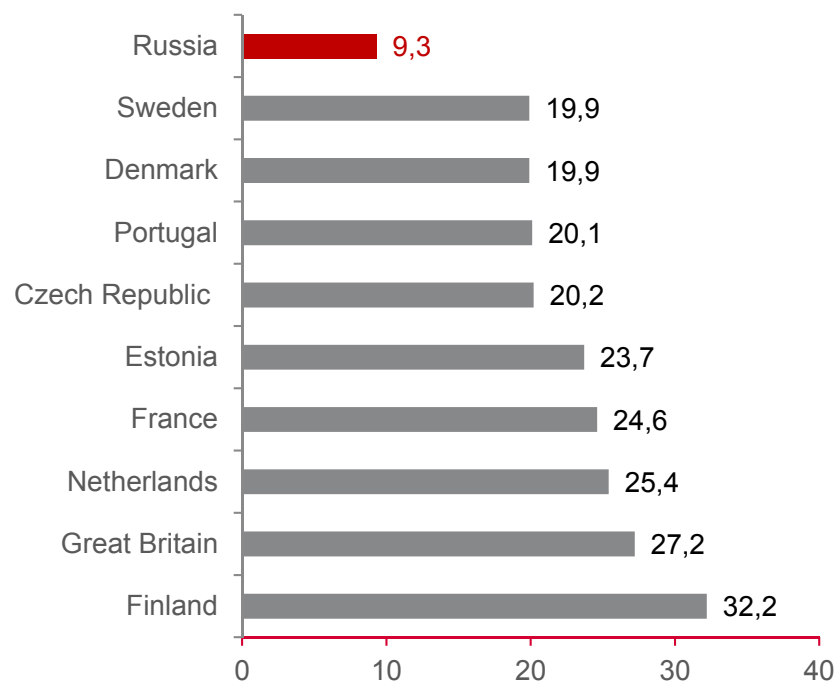
Content

1. Aspects of the accessible environment in Russia and on the transport.
2. Passenger Stations Directorate (DZV) tasks and projects in creating barrier-free environment
3. Railway stations' reconstruction is a major step toward a more accessible environment
4. Information space and services to the people with reduced mobility (PRM) on DZV's infrastructure

Total number of PRM in Russia exceeds 14 million people

3

The share of disabled people in Europe (%)



Total number of disabled people in Russia in 2011 exceeded **14 million people**, among them about **3 million persons** with disorders of the musculoskeletal system, including expert estimates, about **200 thousand** move on wheelchairs

About 7 million people have difficulties in overcoming barriers to public transport and visiting the social infrastructure's facilities

It is assumed that by 2015 the total number of persons with disabilities may exceed **15 million people**



- Signing the Federal law on ratification of the UN Convention on the rights of persons with disabilities on 3 may 2012

- Government Decree №175 approved the State program of the Russian Federation «Accessible environment for 2011-2015» on 17 March 2011

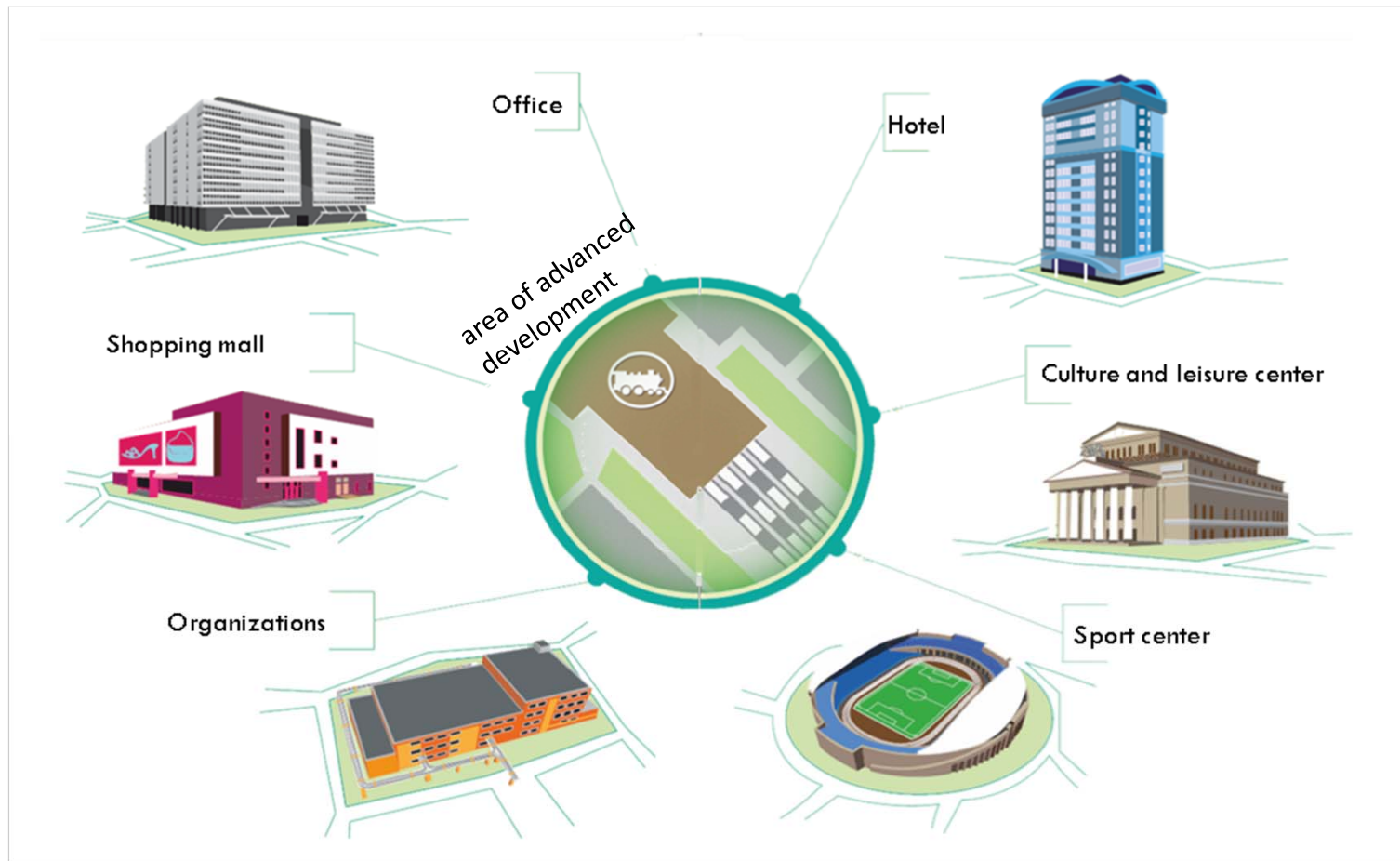
Mrs. SAPSAY – DZV – Barrier-free environment in passenger stations

17-18 October 2013



Modern understanding: what should be the station?

4



Station's infrastructure is not always barrier-free city environment for PRM

5

Different types of obstacles obstruct movement of PRM in stations:

- Vertical obstacles
- Horizontal and spatial obstacles
- Ergonomic obstacles
- Cognitive and psychological obstacles
- Anthropometric obstacles
- The absence of visual, audio and tactile information for PRM
- Ununified technology services together with carriers and adjacent types of transport



What does accessible environment provide in stations?

Quality, safety, accessibility, reliability, effectiveness

Mrs. SAPSAY – DZV – Barrier-free environment in passenger stations

17-18 October 2013



Station is an essential part of life for passengers with reduced mobility

6



People with reduced mobility (PRM) are:



Persons with a physical, intellectual and mental limitations:

- People with disabilities
- Persons with violations of the senses (hearing, vision)
- People having spatial disorientation or speech disturbance
- Small people
- Overweight people
- People with mental disturbance



Persons with restricted movement due to the age:

- Elderly and valetudinarian people (over 65 years)
- Children under 3 years



Persons with temporary restrictions of movement:

- Temporarily restricted due to diseases and injuries
- Pregnant women
- Passengers with baby strollers or heavy luggage



Mrs. SAPSAY – DZV – Barrier-free environment in passenger stations

17-18 October 2013

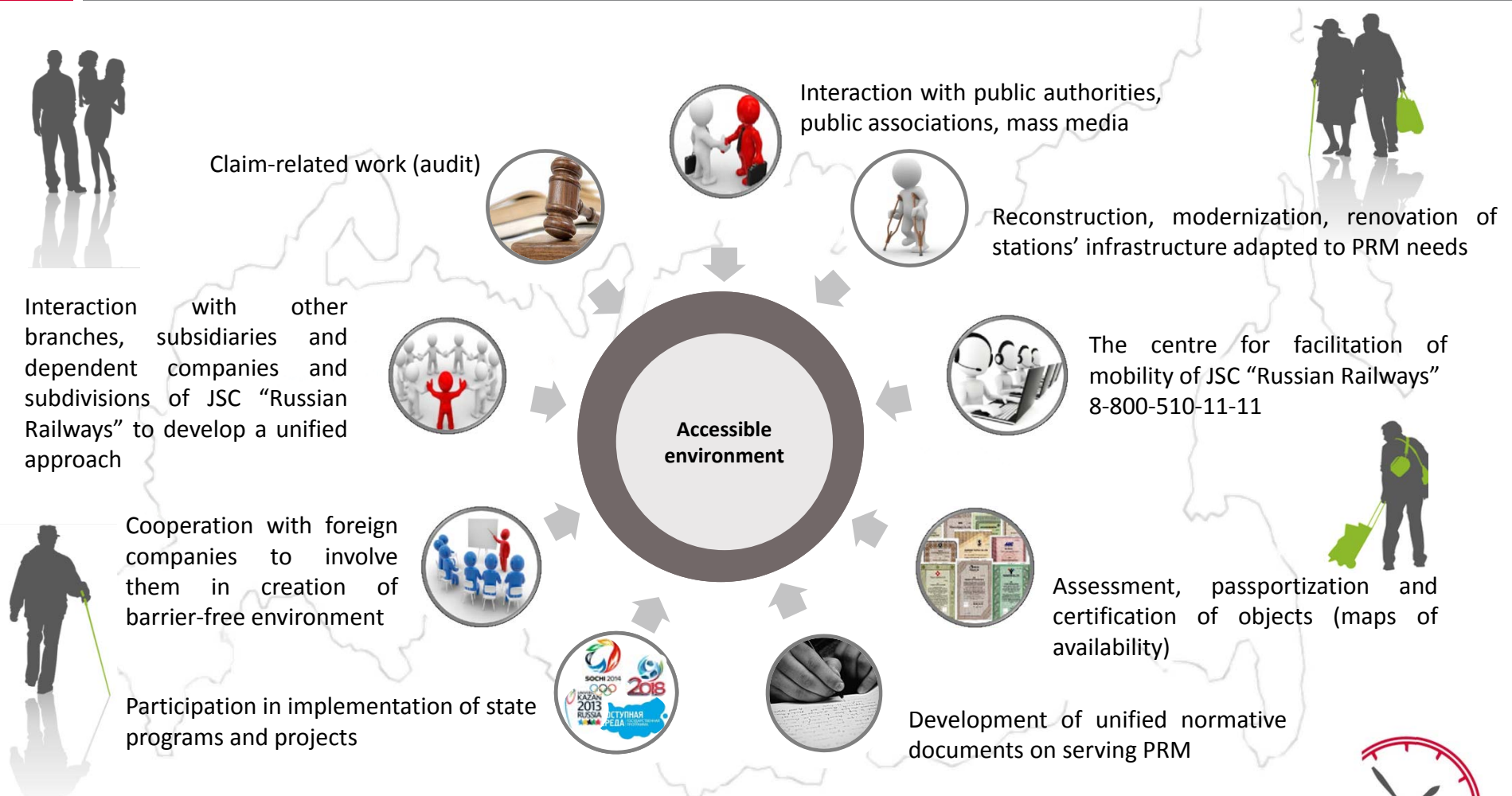
Our task: to ensure a comprehensive approach while working with PRM

7



Passenger Stations Directorate projects in creating barrier-free environment

8



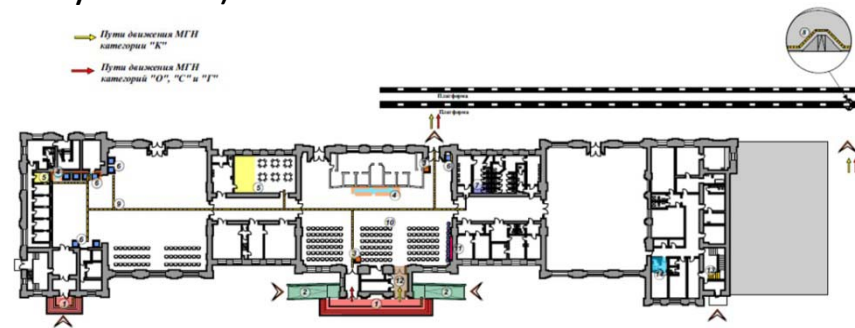
Mrs. SAPSAY – DZV – Barrier-free environment in passenger stations

17-18 October 2013

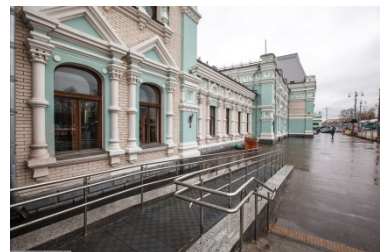
Railway stations' reconstruction is a major step toward a more accessible environment

9

A pilot project on the adaptation of the infrastructure of the monument of architecture for PRM (Rizhskiy station)



- Modern entrances;
- Addition information system in Braille, sound and lighting options, symbolic circuits, call buttons;
- Adapted ticket counters, sanitary-household rooms, rest rooms;
- Special rest areas inside the station and on the platforms, and others



Mrs. SAPSAY – DZV – Barrier-free environment in passenger stations

17-18 October 2013

Railway stations' reconstruction is a major step toward a more accessible environment

10

Project on the adaptation of the infrastructure of the monument of architecture for PRM (Leningradskiy station)



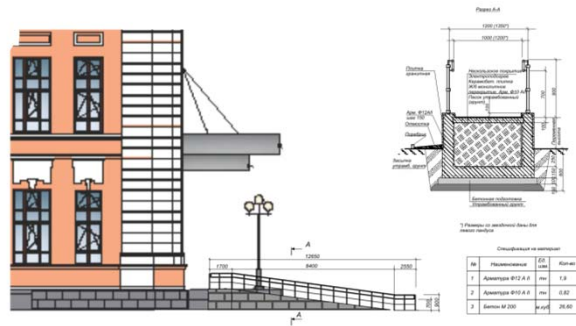
Mrs. SAPSAY – DZV – Barrier-free environment in passenger stations

17-18 October 2013

Railway stations' reconstruction is a major step toward a more accessible environment

11

Project on the adaptation of the infrastructure of the monument of architecture for PRM (Savelovskiy station)



Project on the adaptation of the infrastructure of the monument of architecture for PRM (Paveletskiy station)



Mrs. SAPSAY – DZV – Barrier-free environment in passenger stations

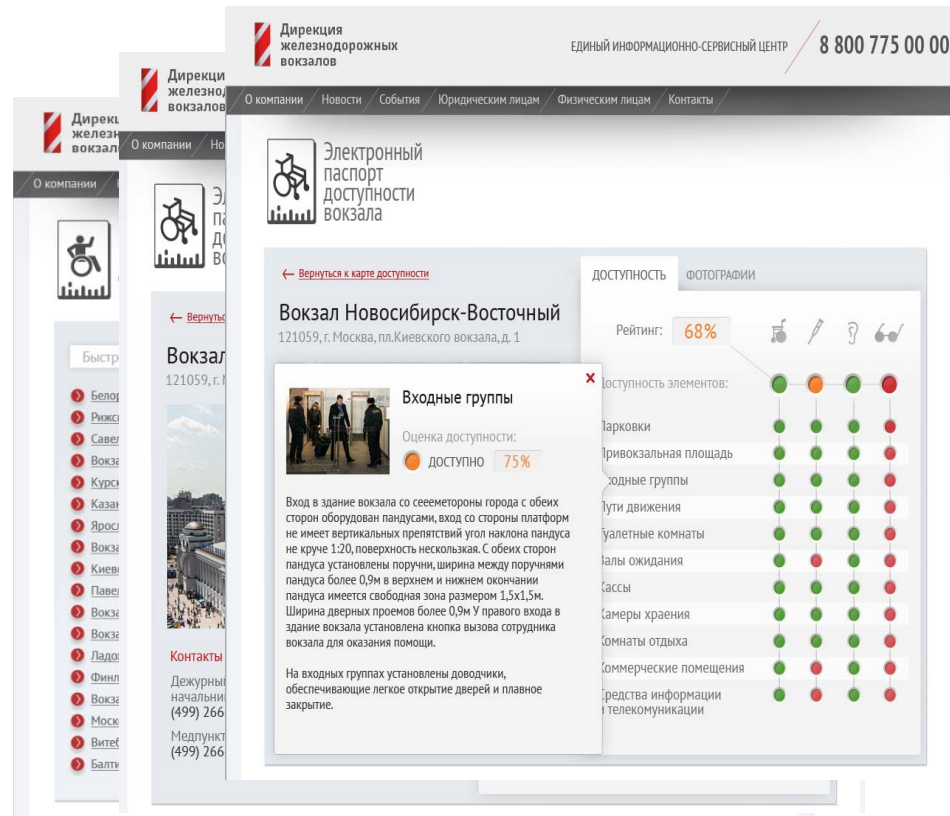
17-18 October 2013

Information space for PRM

12

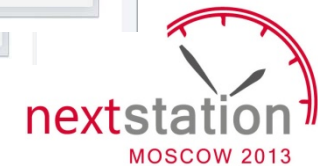
Information content for placing in interactive space

Maps of stations' availability



Mrs. SAPSAY – DZV – Barrier-free environment in passenger stations

17-18 October 2013



Information space for PRM (The centre for facilitation of mobility)

13



8-800-510-11-11



Services provided by the centre for facilitation of mobility:

- ❑ Information desk
- ❑ Handling requests
- ❑ Receiving and processing of an application for assisting to PRM in stations and while boarding/disembarking in rolling stock
 - Forwarding requests to executor
 - Providing support and assistances services
 - Assistance in choosing the best travel routes reflecting the level of accessible environment in stations
 - Orders' execution control

Projects of creating accessible environment in stations in cooperation with the State



Universiade 2013 in Kazan



XXII Olympic Winter Games and XI Paralympic Winter Games in Sochi



FIFA world Cup 2018

(Moscow (9 stations), Saint-Petersburg (5 stations), Kaliningrad, Volgograd, Kazan, Nizhniy Novgorod, Samara, Saransk, Rostov on Don, Sochi, Ekaterinburg)



Development of high-speed connection in Russia

Mrs. SAPSAY – DZV – Barrier-free environment in passenger stations

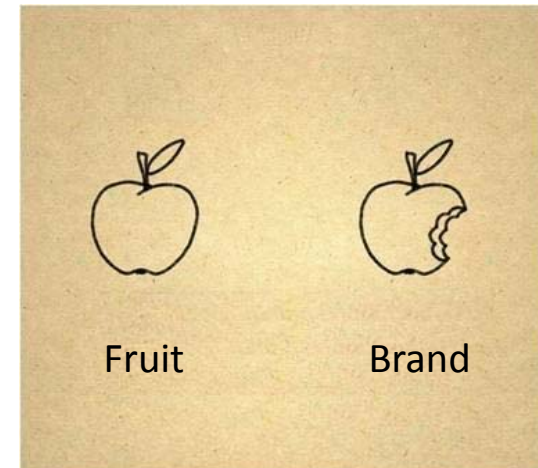
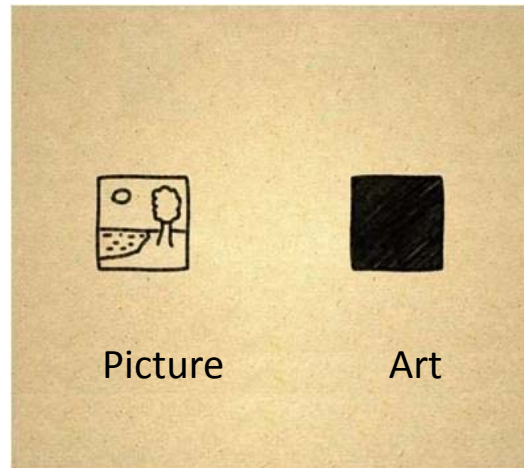
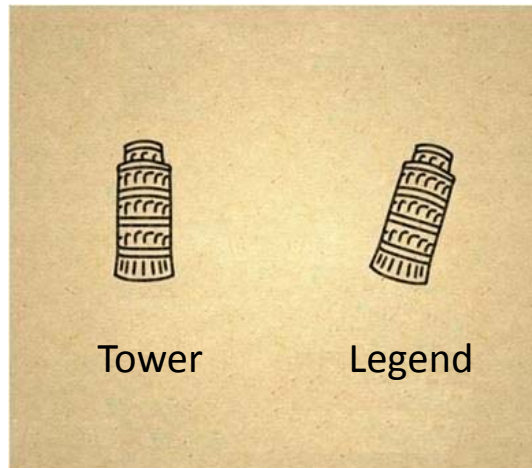
17-18 October 2013



"Such as all or great"

15

Look at abnormalities in other way.
Every person with a disability can be a great



16

Thank you for attention