









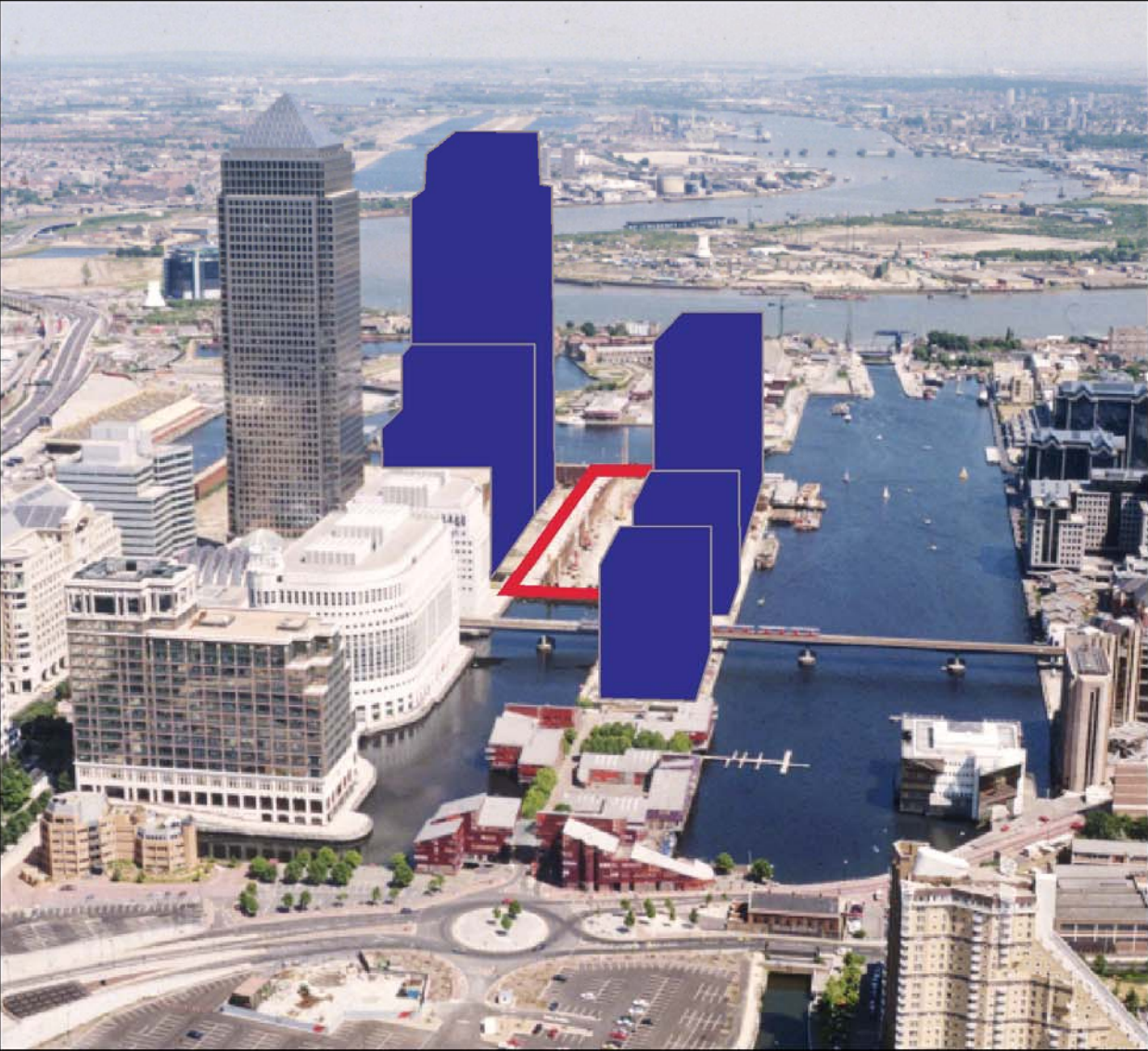




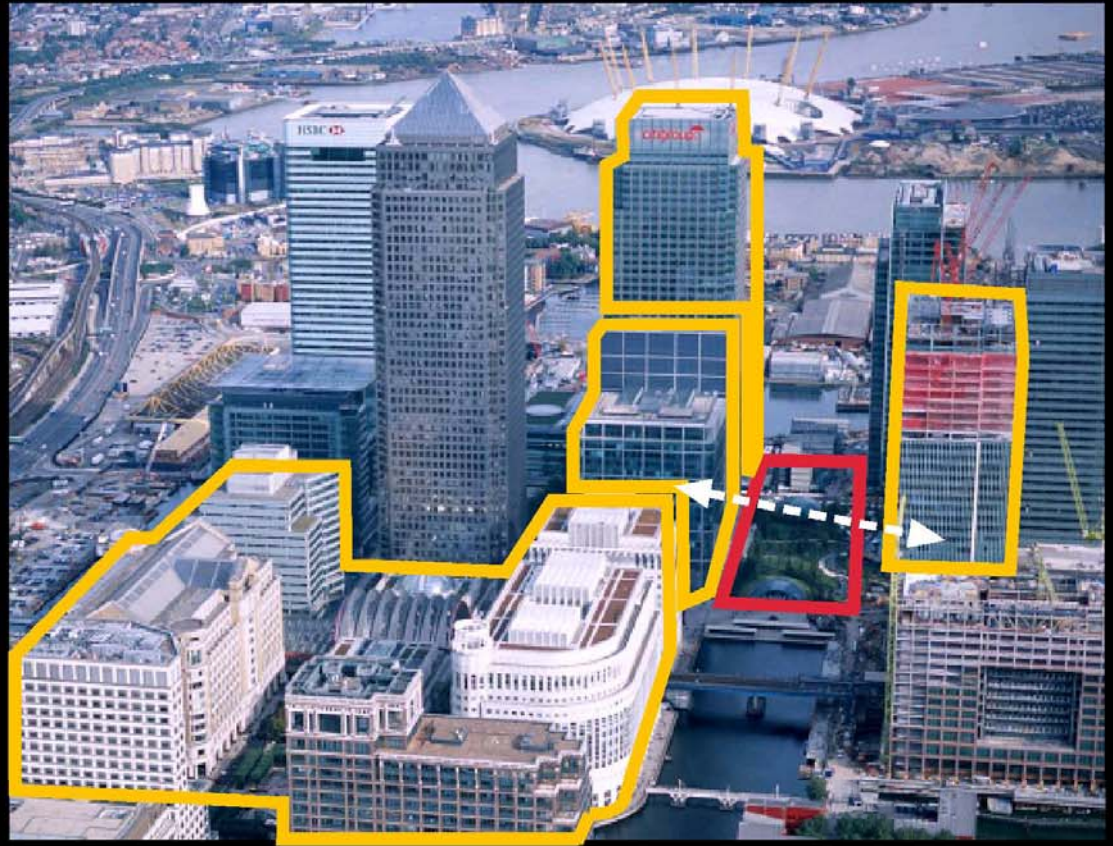
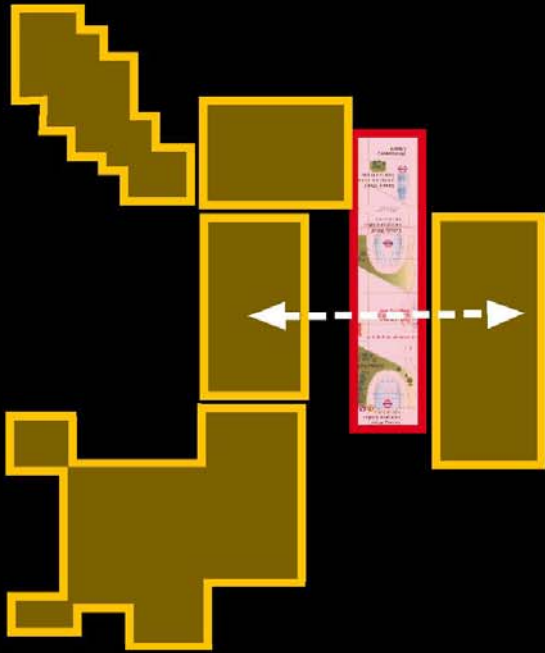
Station



Station = Banks



Underground Link





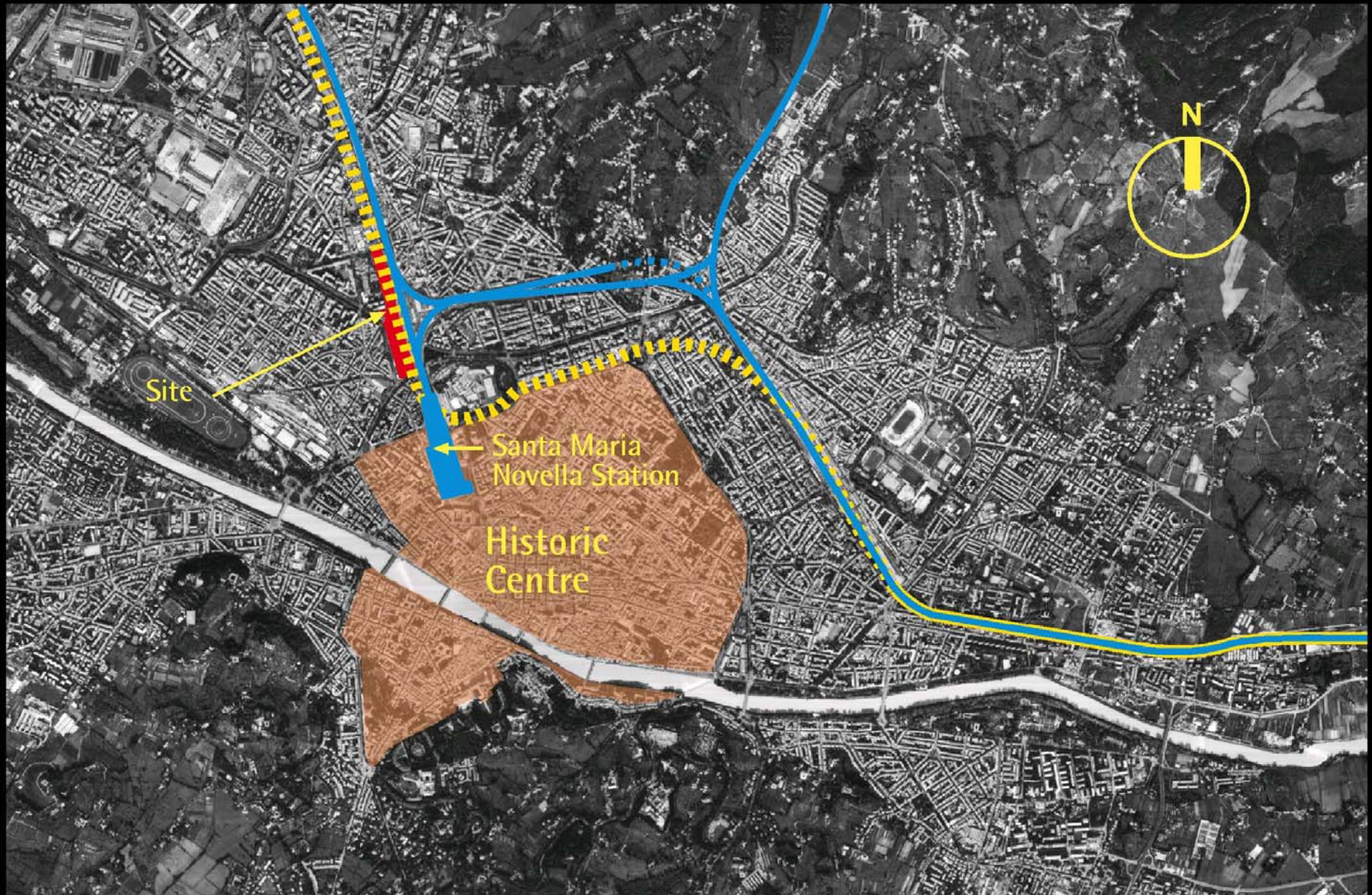
Back the Bid

Back the Bid

Back the Bid

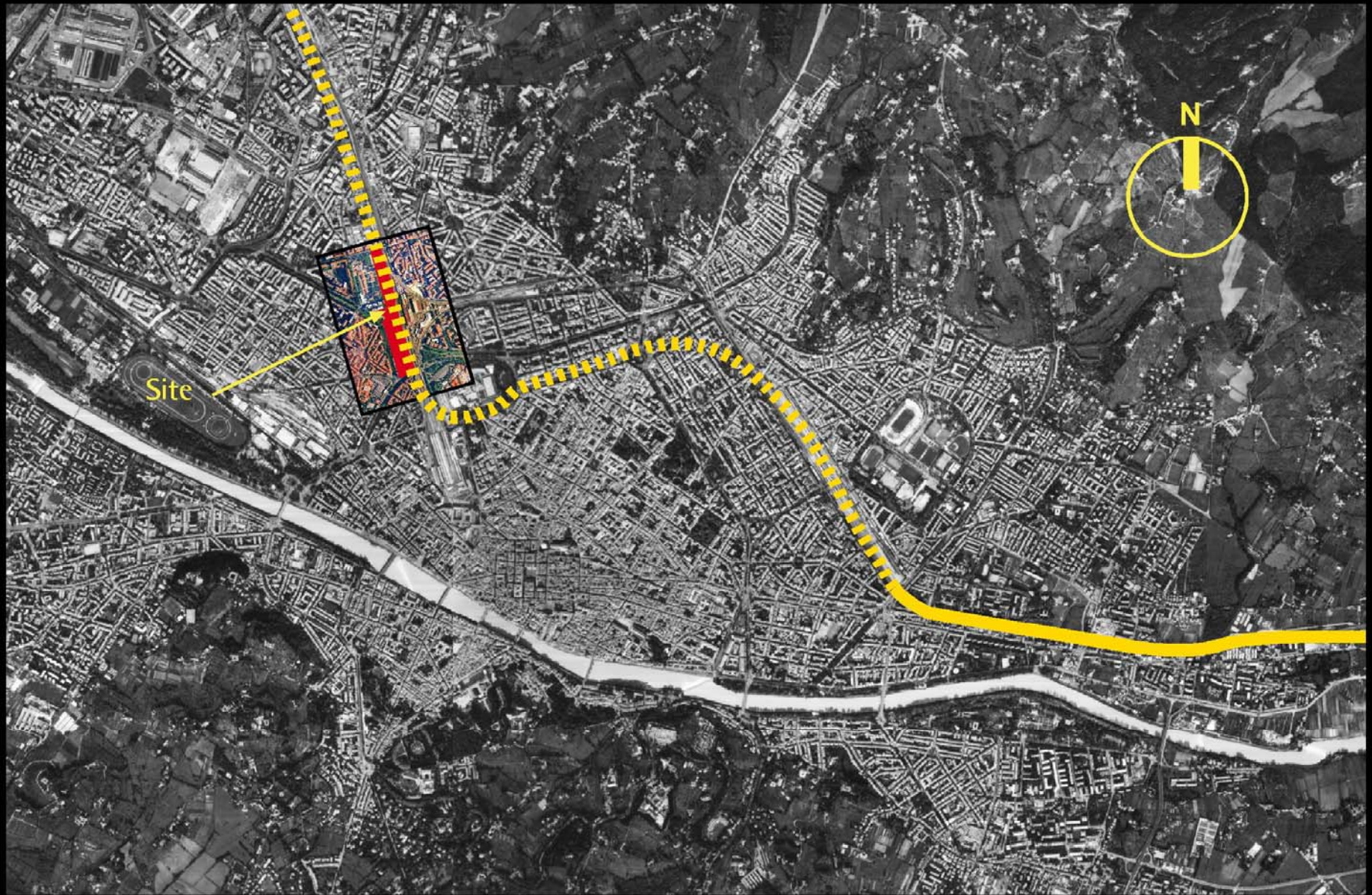
Back the Bid
LONDON 2012
LONDON 2012
LONDON 2012
Back the Bid

Back the Bid



Existing Lines Above Ground
TAV Line Above Ground

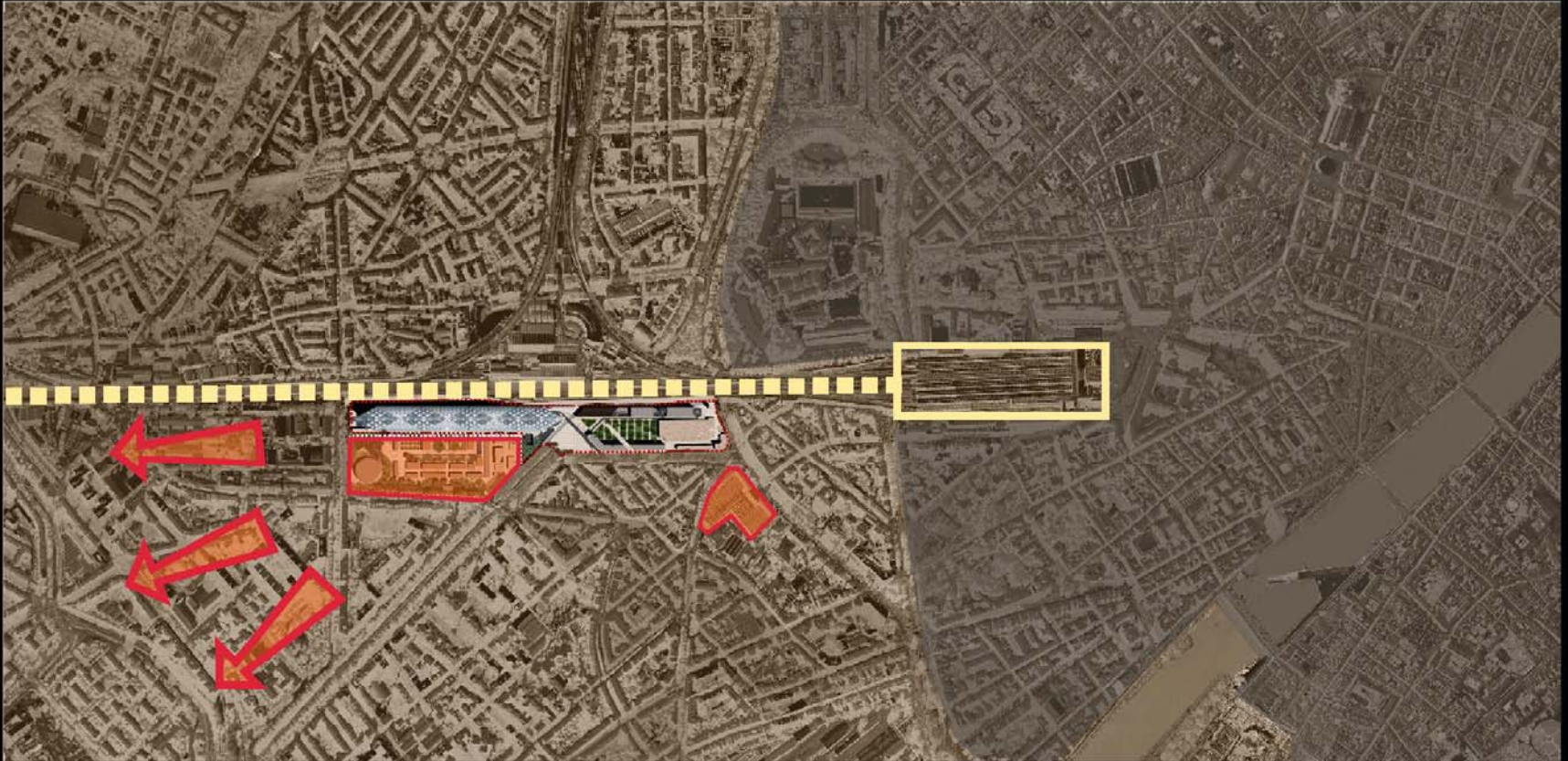
Existing Lines Below Ground
TAV Line Below Ground

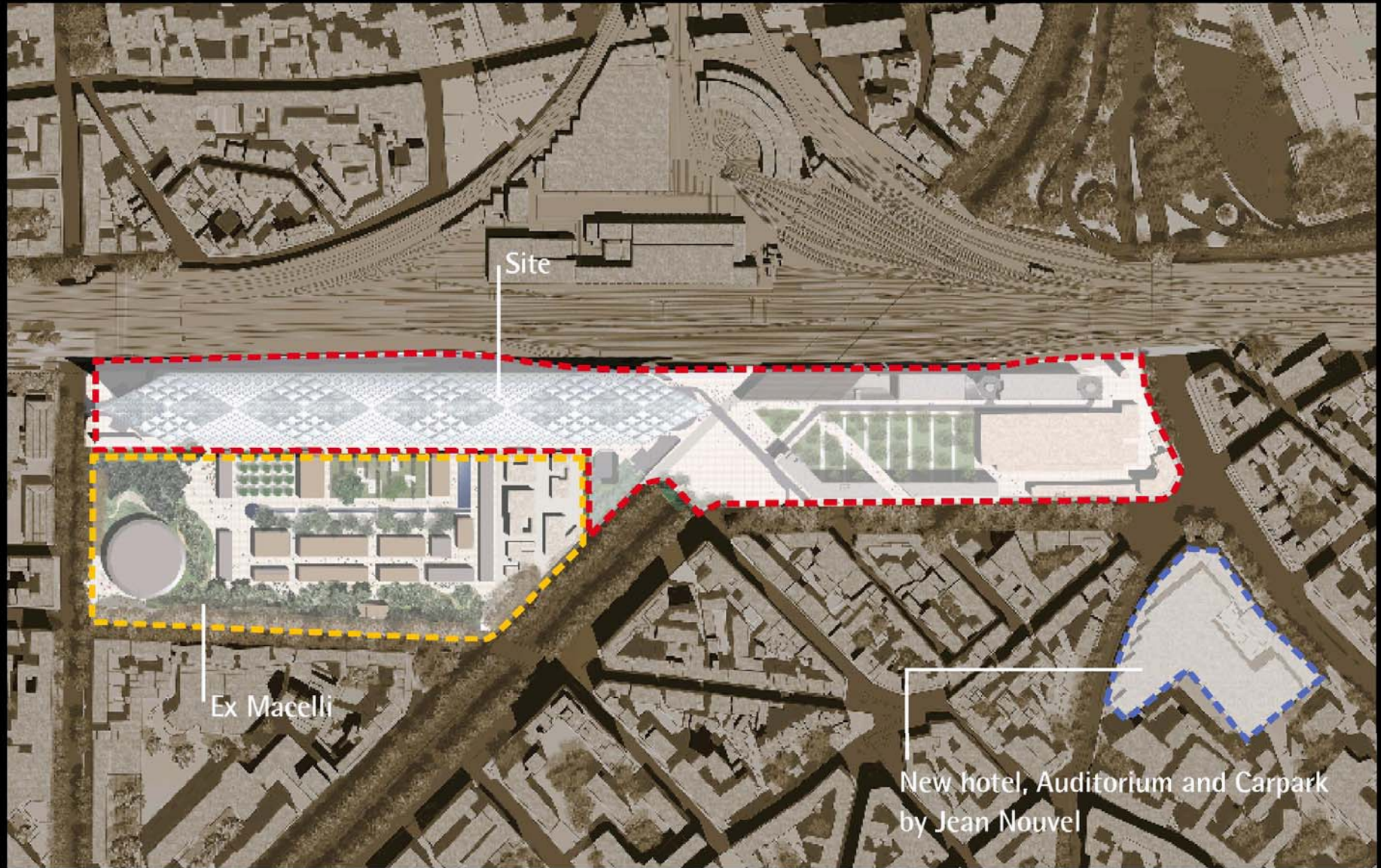


— TAV Line Above Ground

- - - TAV Line Below Ground

Potential Development



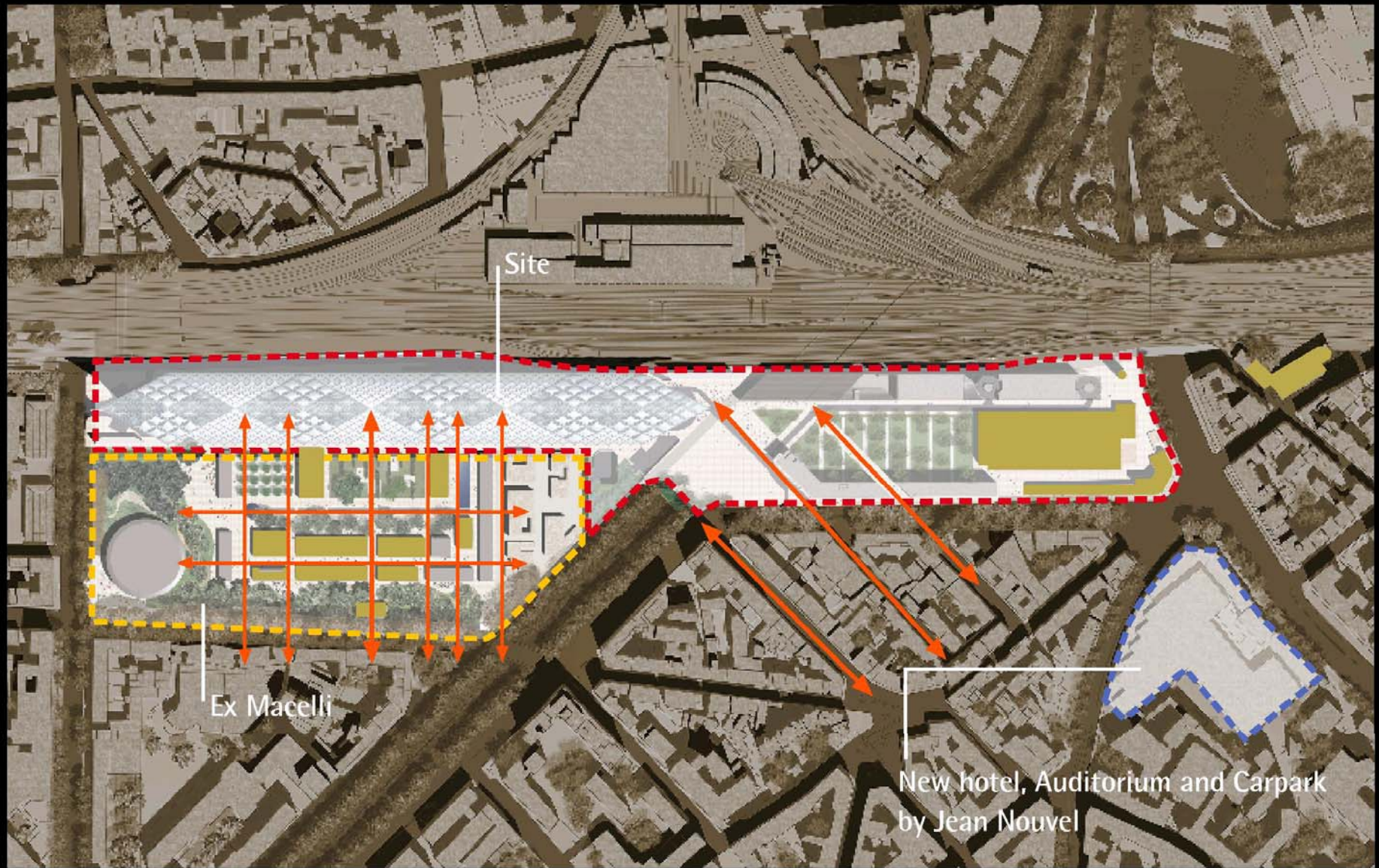


Site

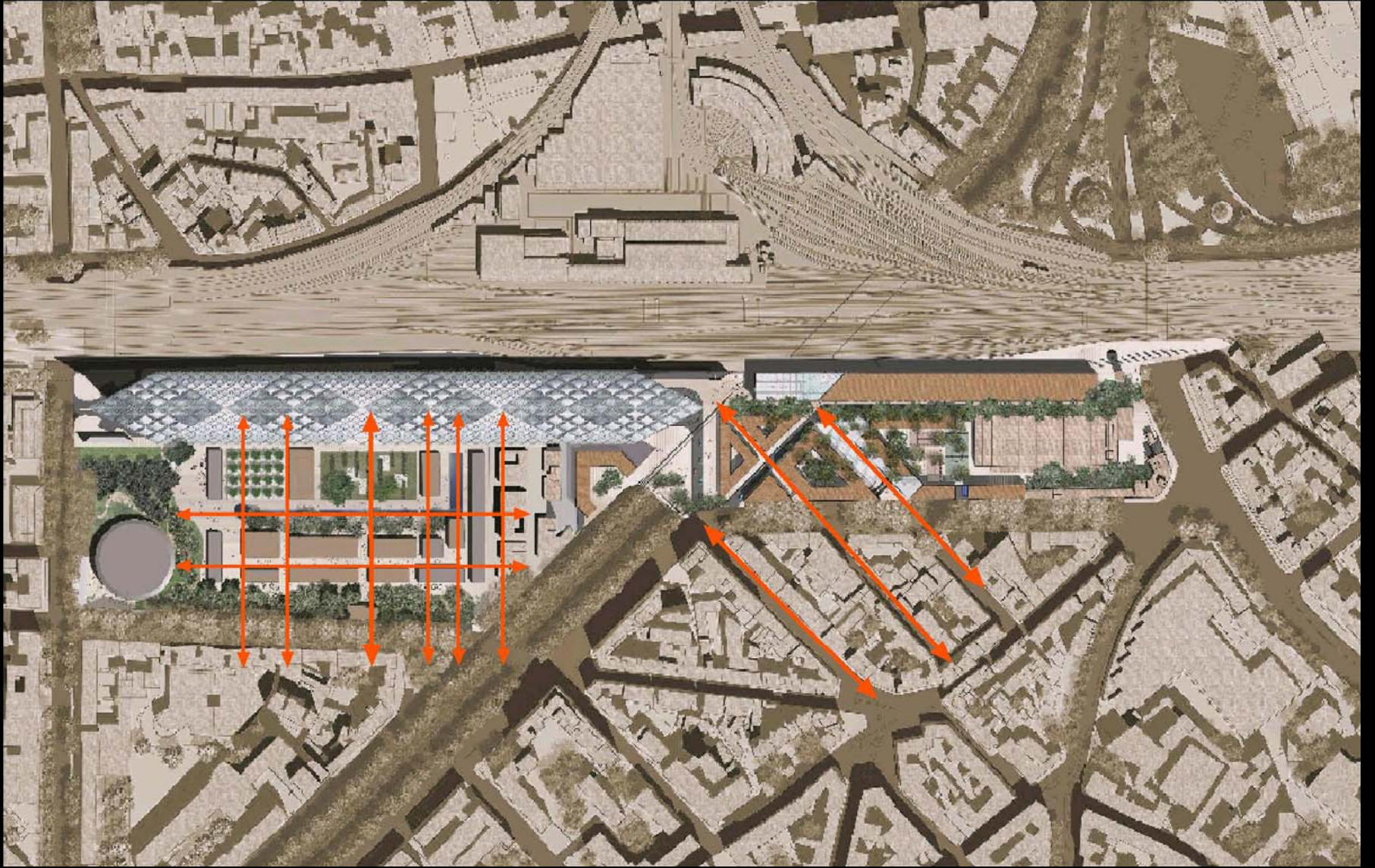
Ex Macelli

New hotel, Auditorium and Carpark
by Jean Nouvel

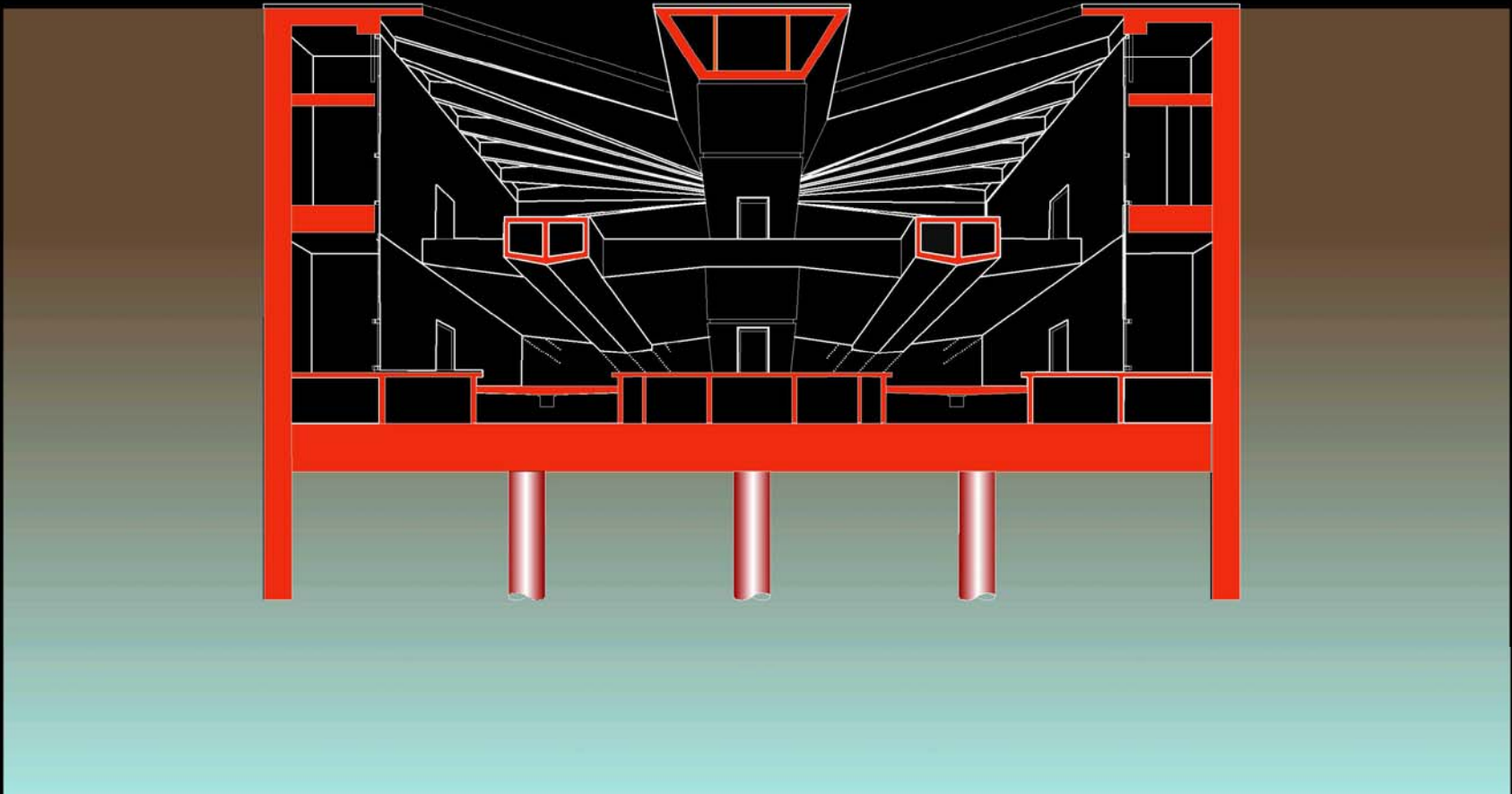


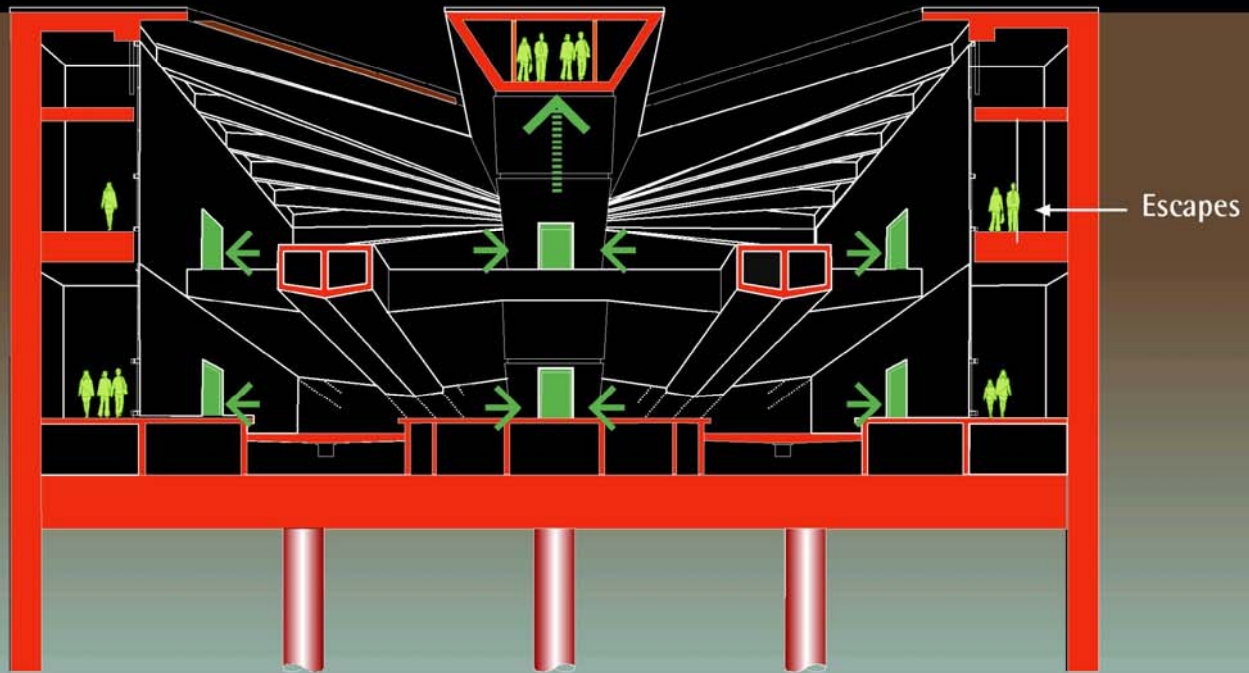






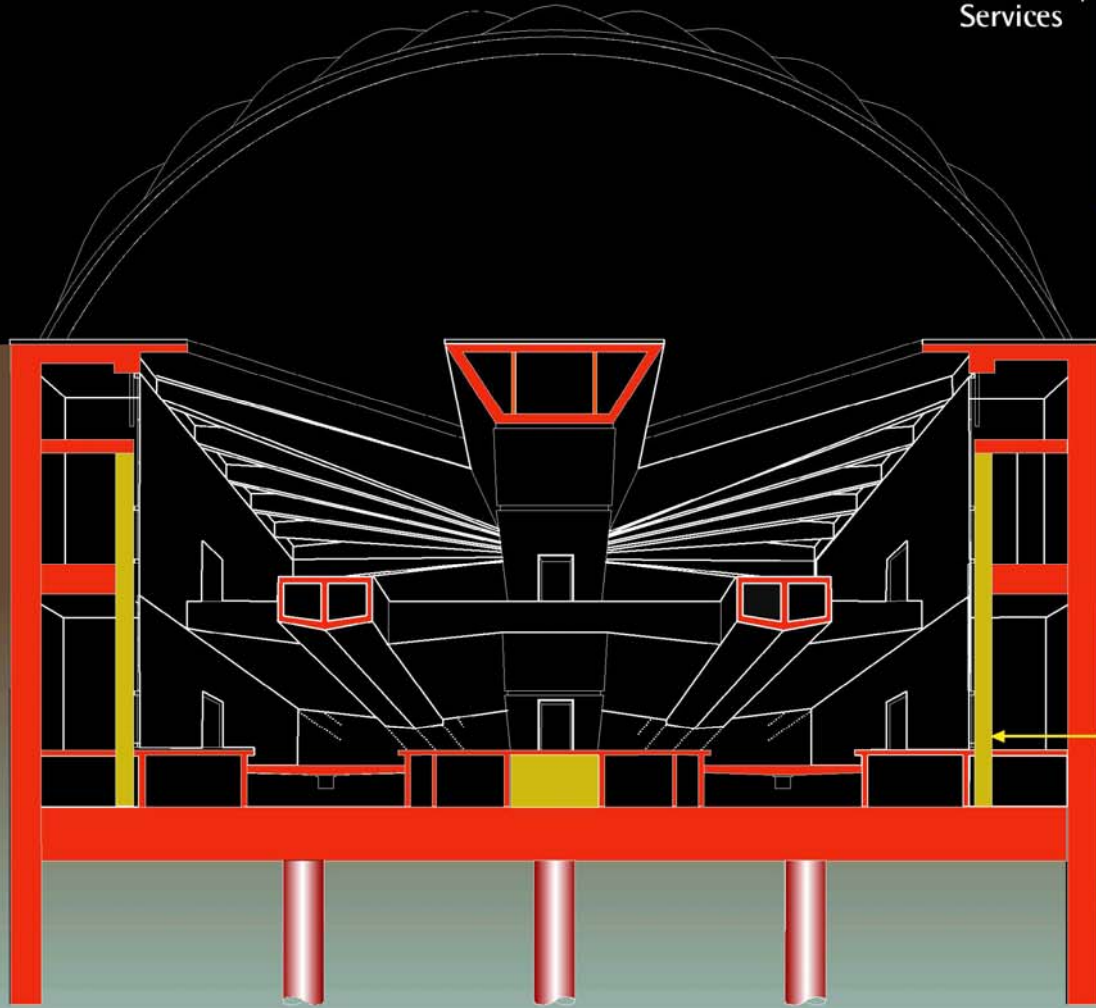


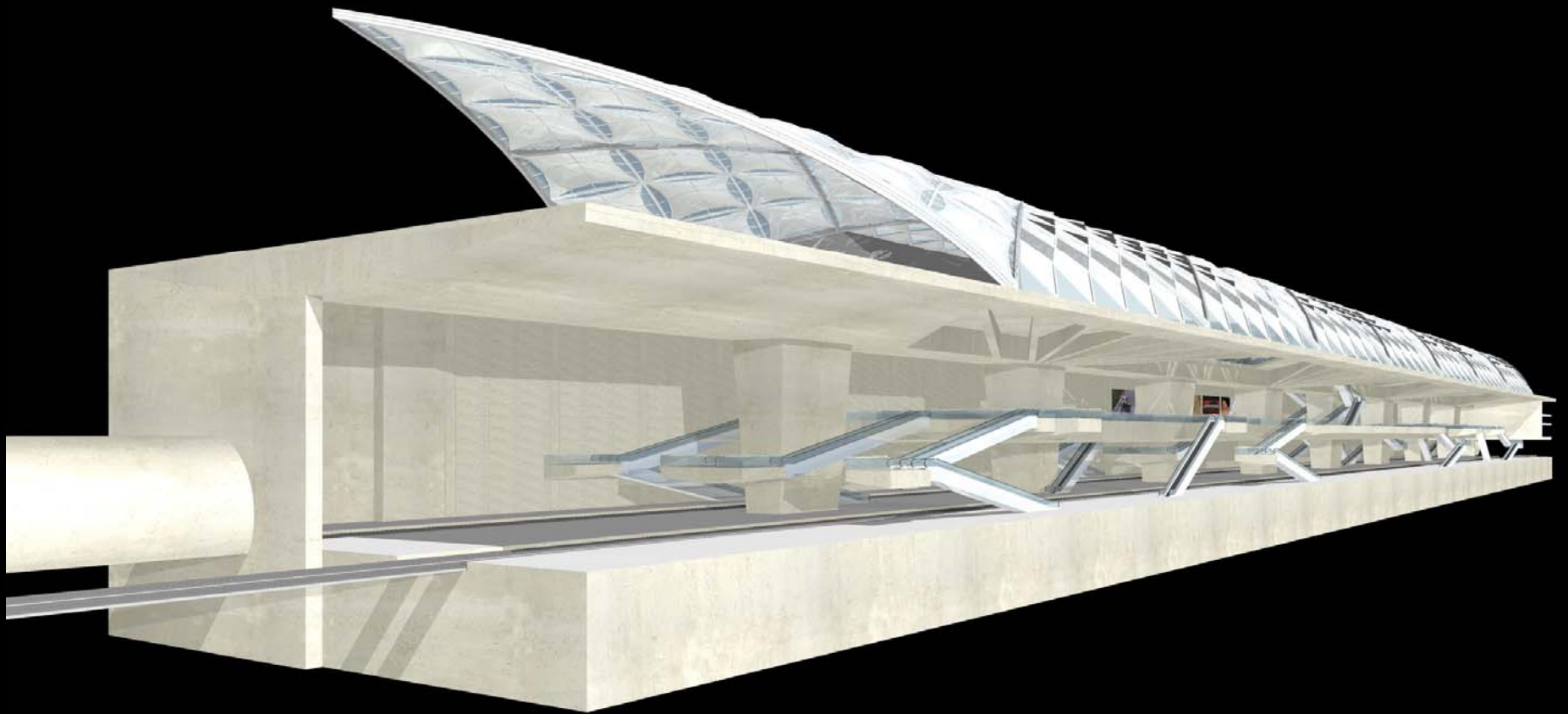




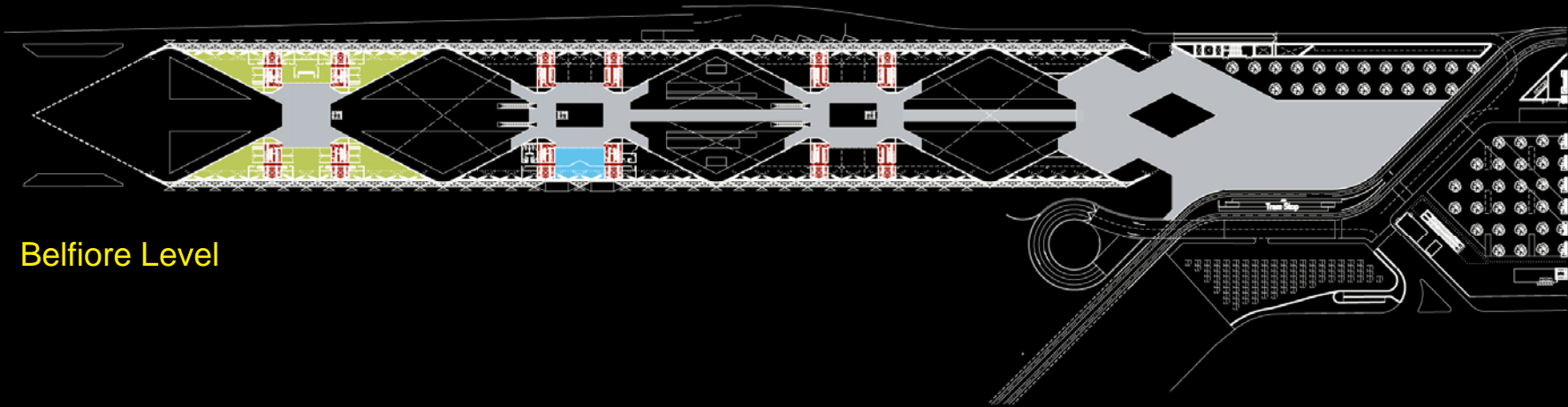
Secondary Services

-  Hose Reel
-  Fire Extinguisher
-  Manual Call Point
-  ectv

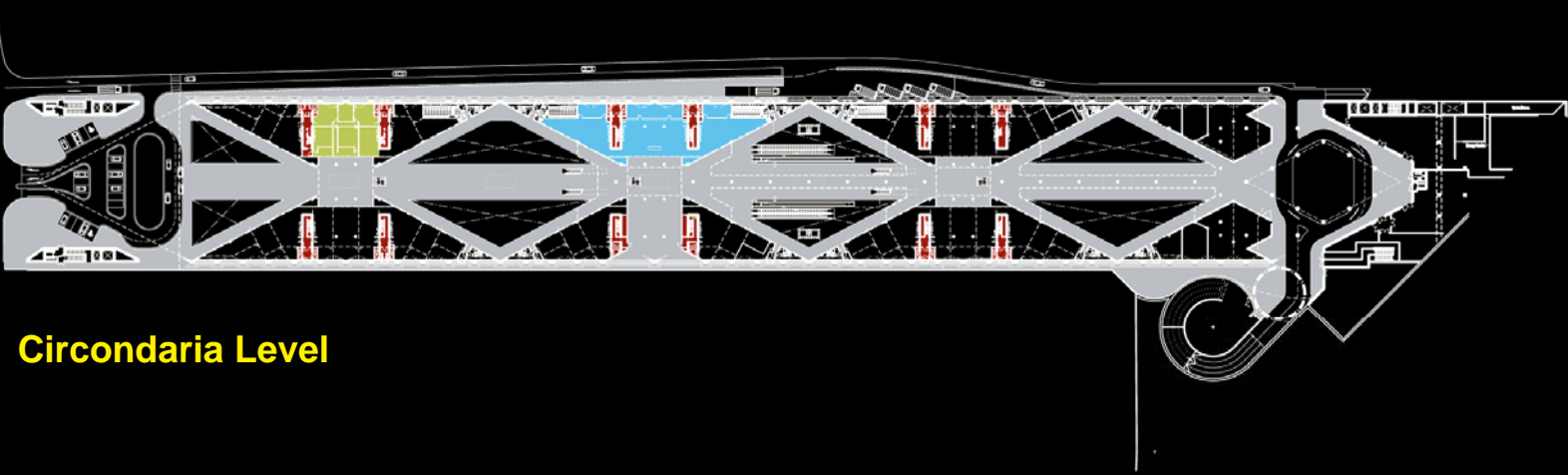




Station Facilities

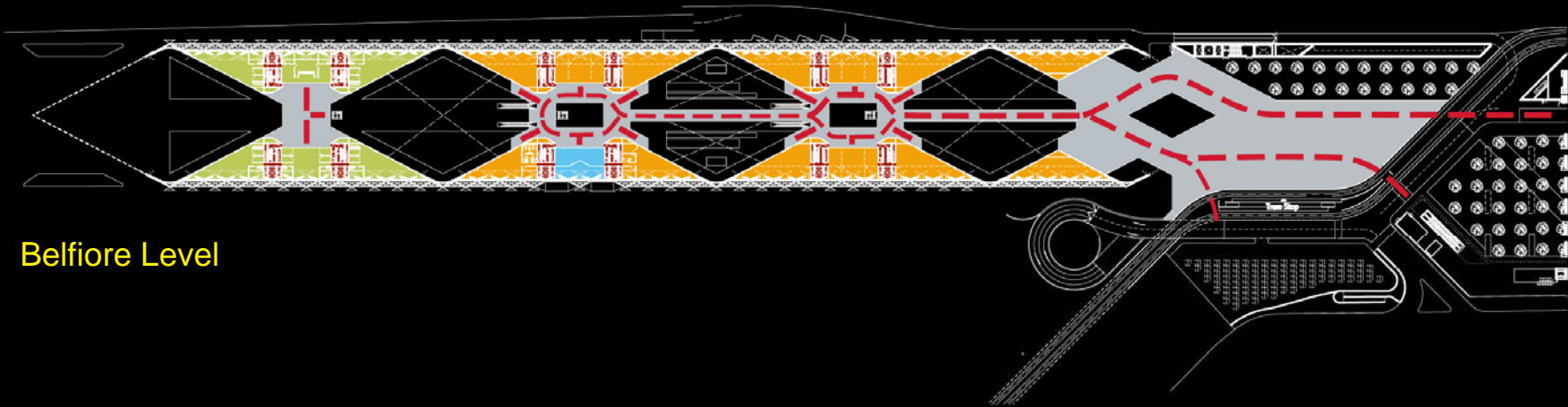


Belfiore Level

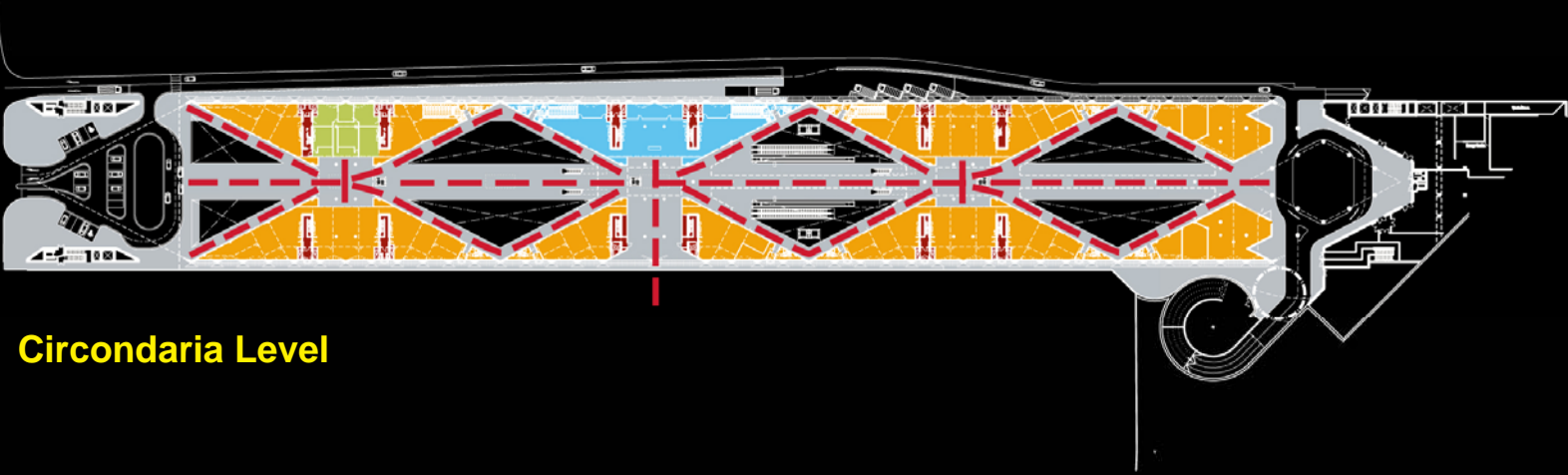


Circondaria Level

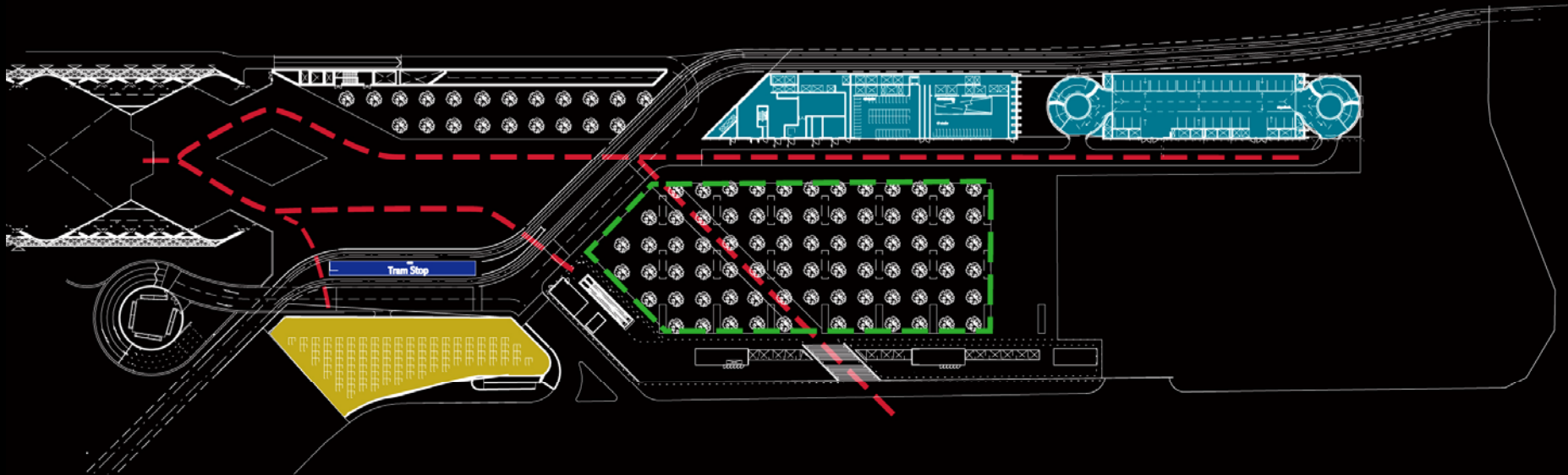
Pedestrian Flows



Belfiore Level

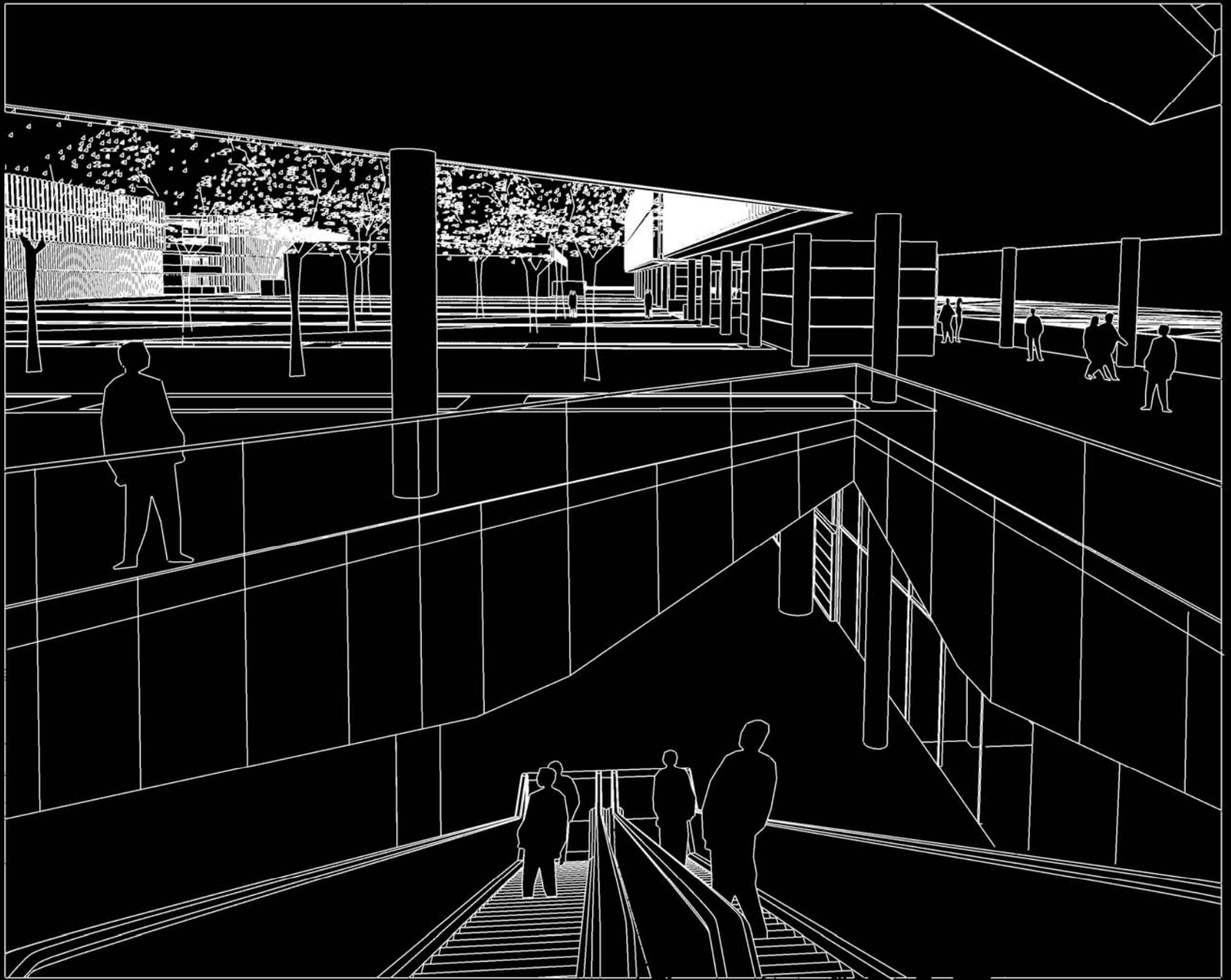


Circondaria Level

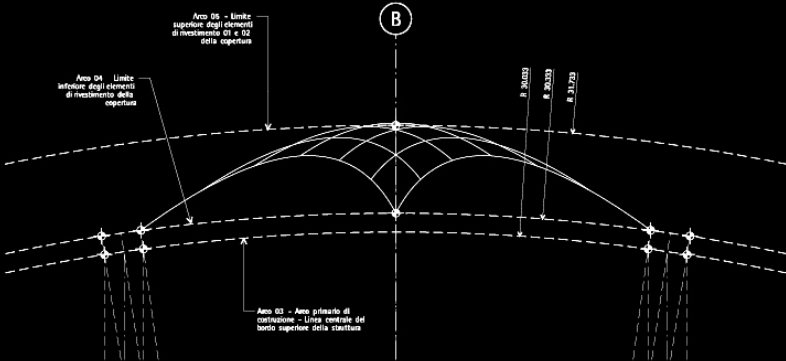




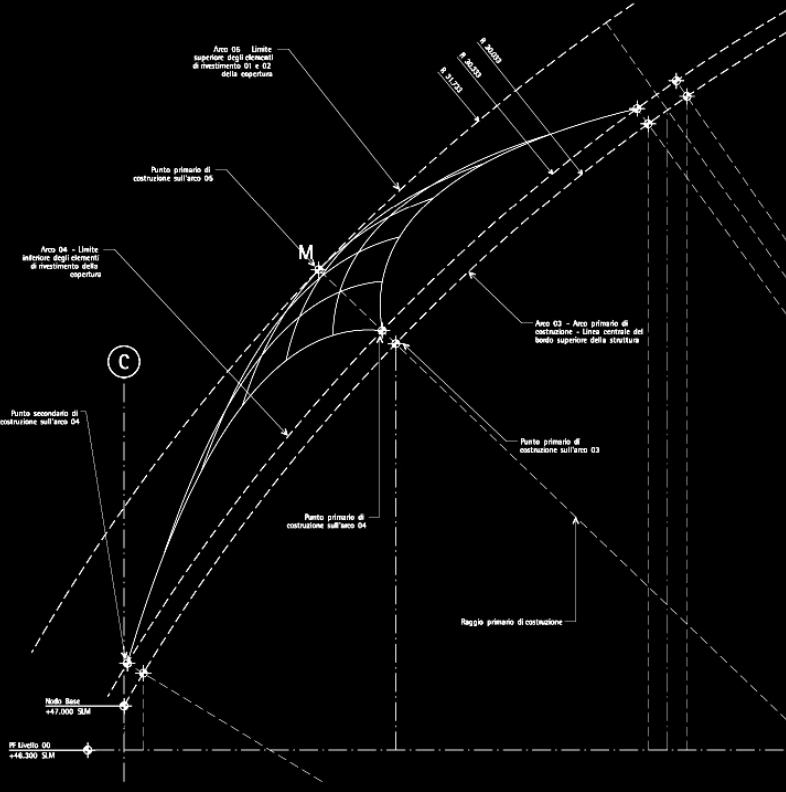




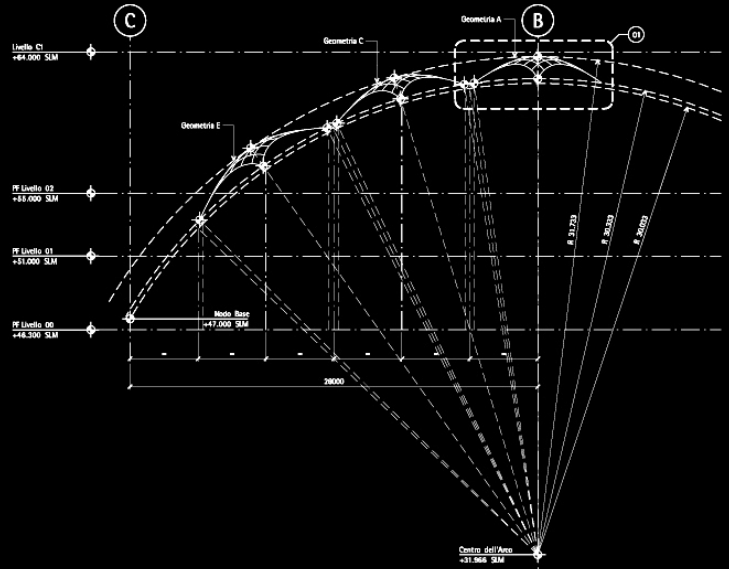




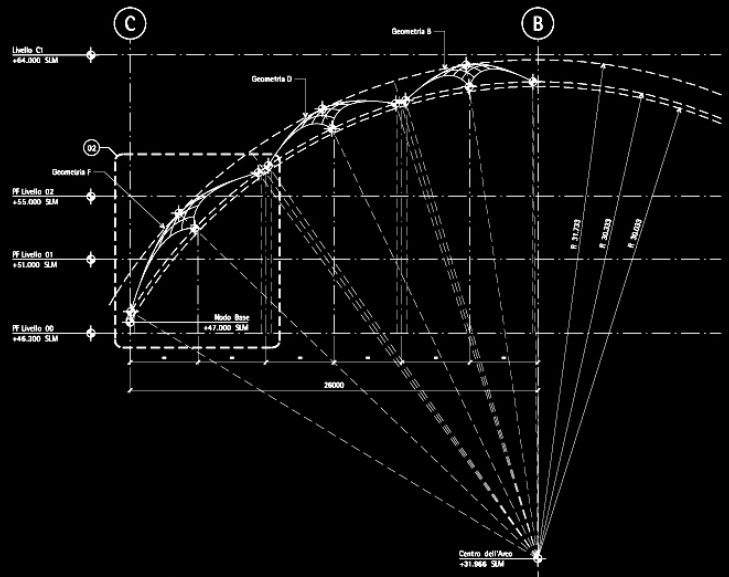
01 Setting Out Geometria A



02 Setting Out Geometria F



03 Sezione Tipo - Setting Out Geometria A, C e E



04 Sezione Tipo - Setting Out Geometria B, D e F

- 1. In ogni caso, durante lavori di cantiere, il cantiere deve essere mantenuto pulito.
- 2. Tutti i lavori di cantiere devono essere eseguiti secondo le norme di sicurezza vigenti.
- 3. Tutti i lavori di cantiere devono essere eseguiti secondo le norme di sicurezza vigenti.
- 4. Tutti i lavori di cantiere devono essere eseguiti secondo le norme di sicurezza vigenti.

NO.	DATA	DESCRIZIONE	STATO
1	05/09/03	Definitivo	OK
2	05/09/03	Revisione	OK
3	05/09/03	Revisione	OK
4	05/09/03	Revisione	OK
5	05/09/03	Revisione	OK
6	05/09/03	Revisione	OK
7	05/09/03	Revisione	OK
8	05/09/03	Revisione	OK
9	05/09/03	Revisione	OK
10	05/09/03	Revisione	OK
11	05/09/03	Revisione	OK
12	05/09/03	Revisione	OK
13	05/09/03	Revisione	OK
14	05/09/03	Revisione	OK
15	05/09/03	Revisione	OK
16	05/09/03	Revisione	OK
17	05/09/03	Revisione	OK
18	05/09/03	Revisione	OK
19	05/09/03	Revisione	OK
20	05/09/03	Revisione	OK

ARUP

TRIENNALE VELOCITA' S.P.A.
 AREA CENTRO SUD
 STAZIONE AV. DI FRESCHE

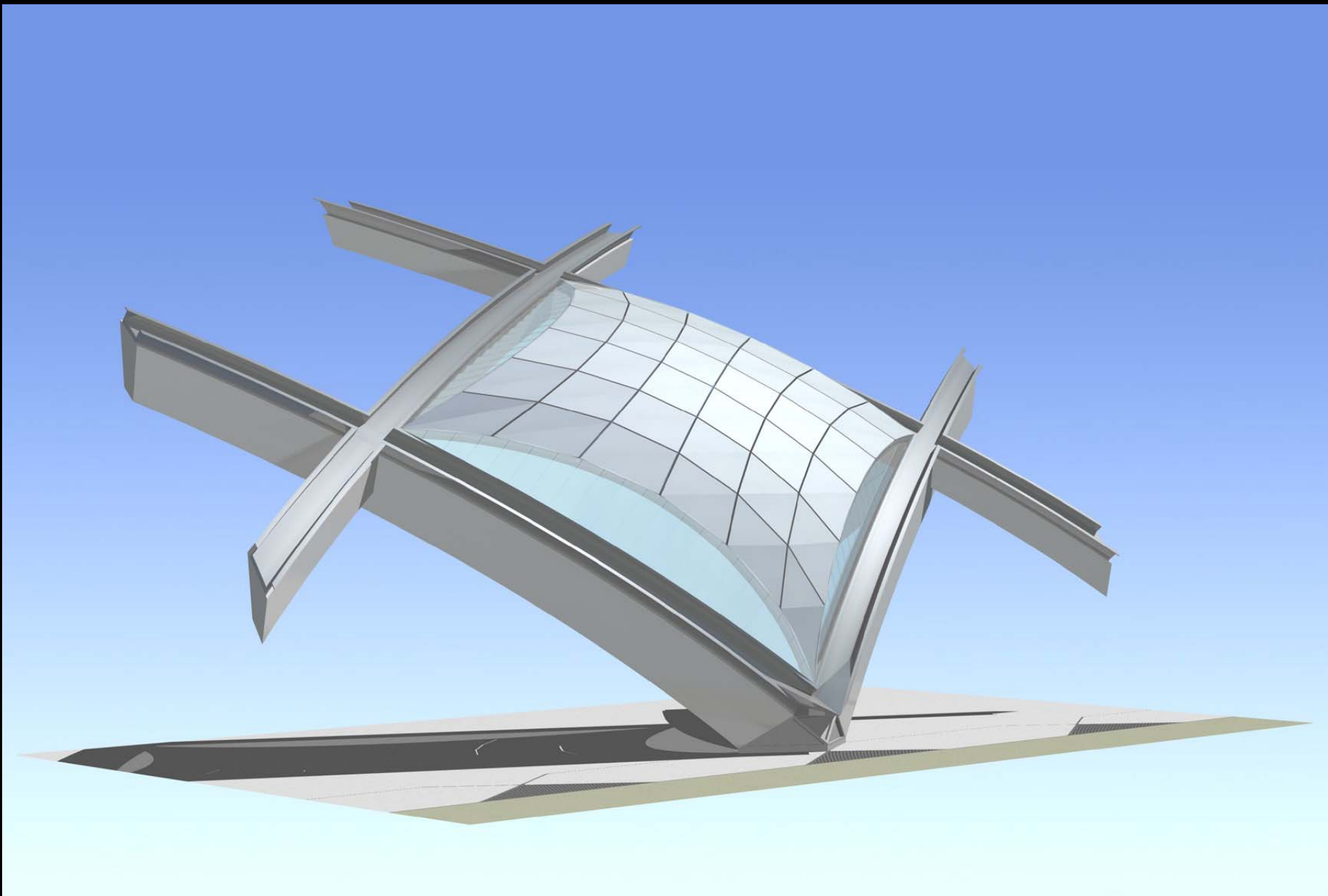
PROGETTO DEFINITIVO

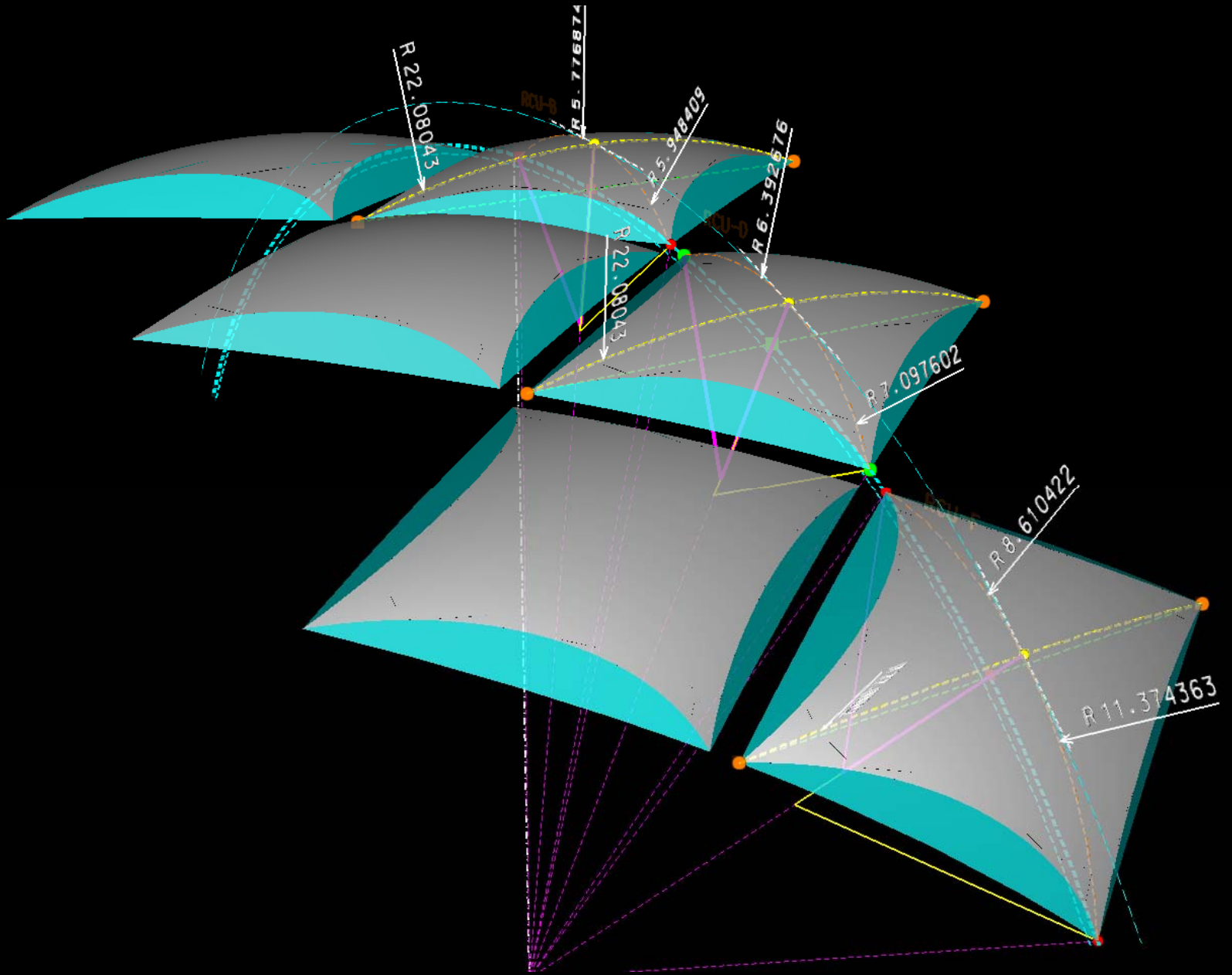
Stazione AV
 Setting Out dell'Elemento di Investimento della Copertura
 Tipo 01 e 02 (UD)

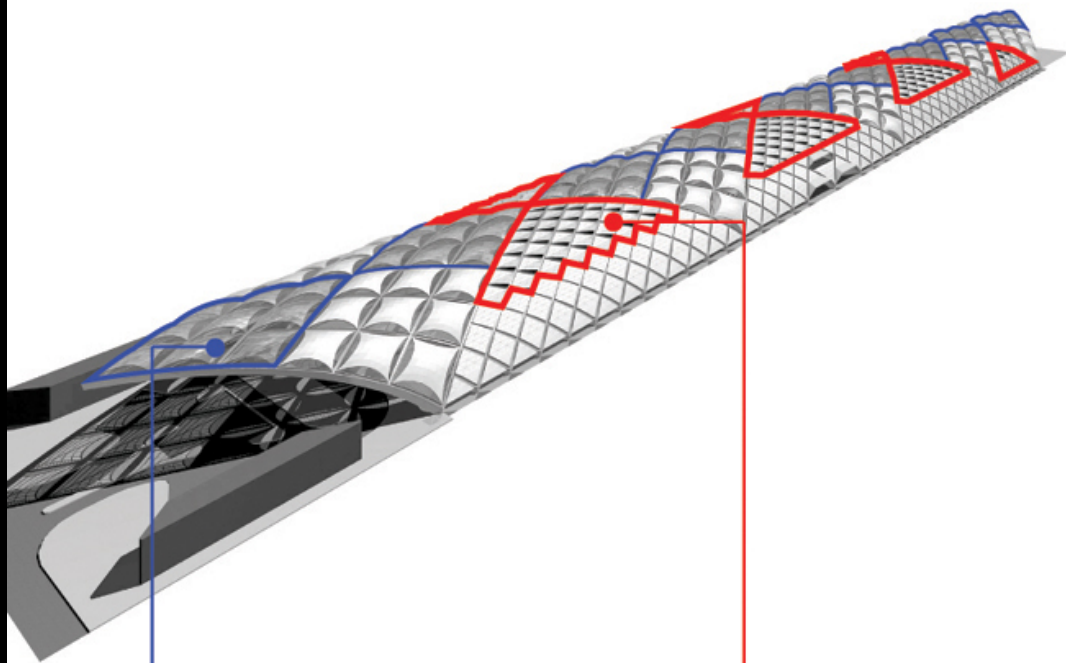
00

AV-01-01-10075/REP
 05.09.03

A5670



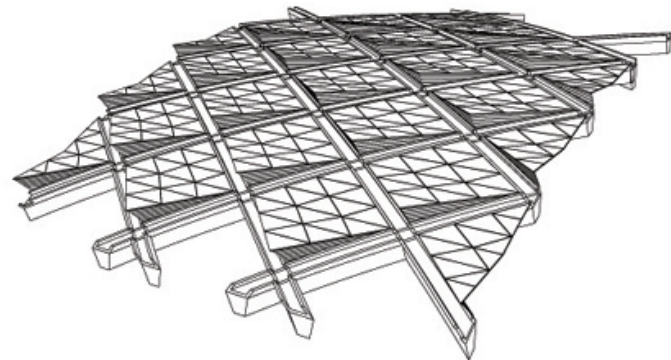




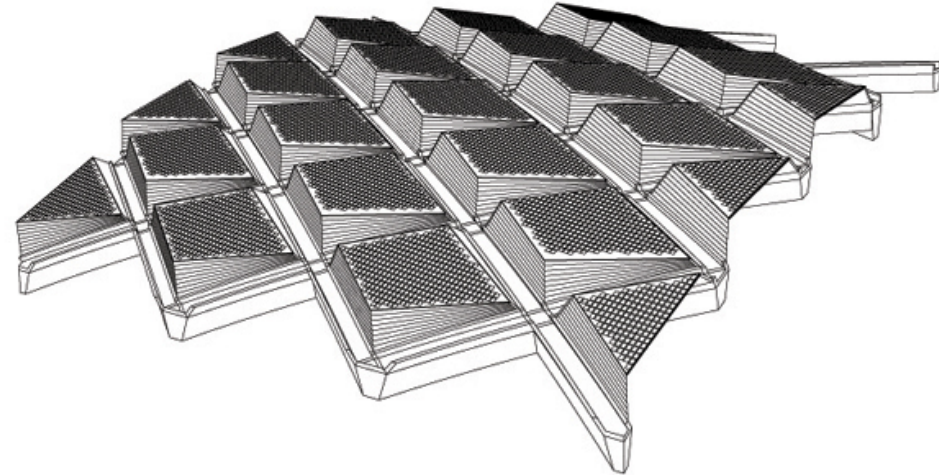
In Definitivo PV panels were located in the RCU-01 units (top 3x3 pillow bays).

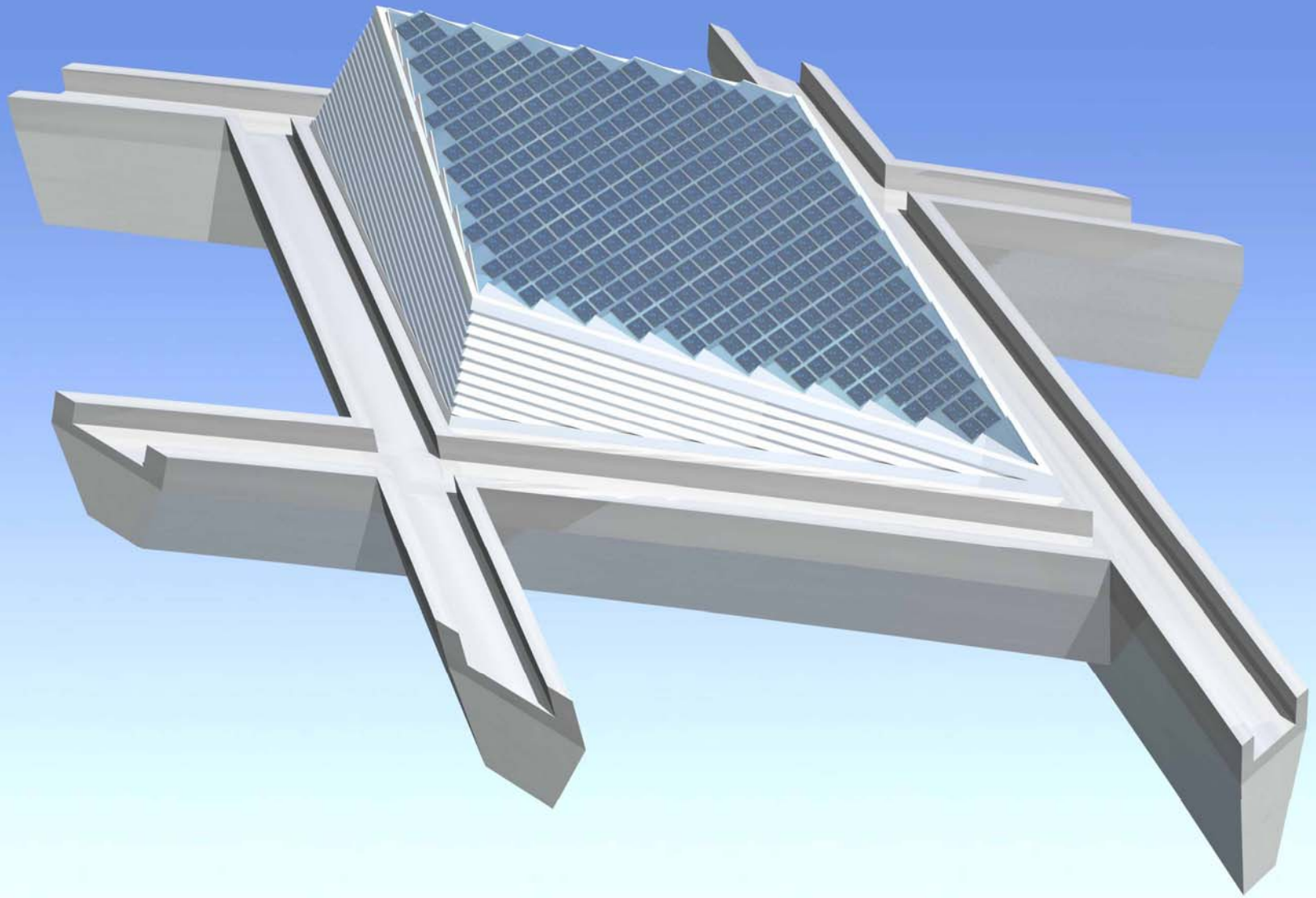


In the current issue PV panels are located in the RCU-03 units (vents area).



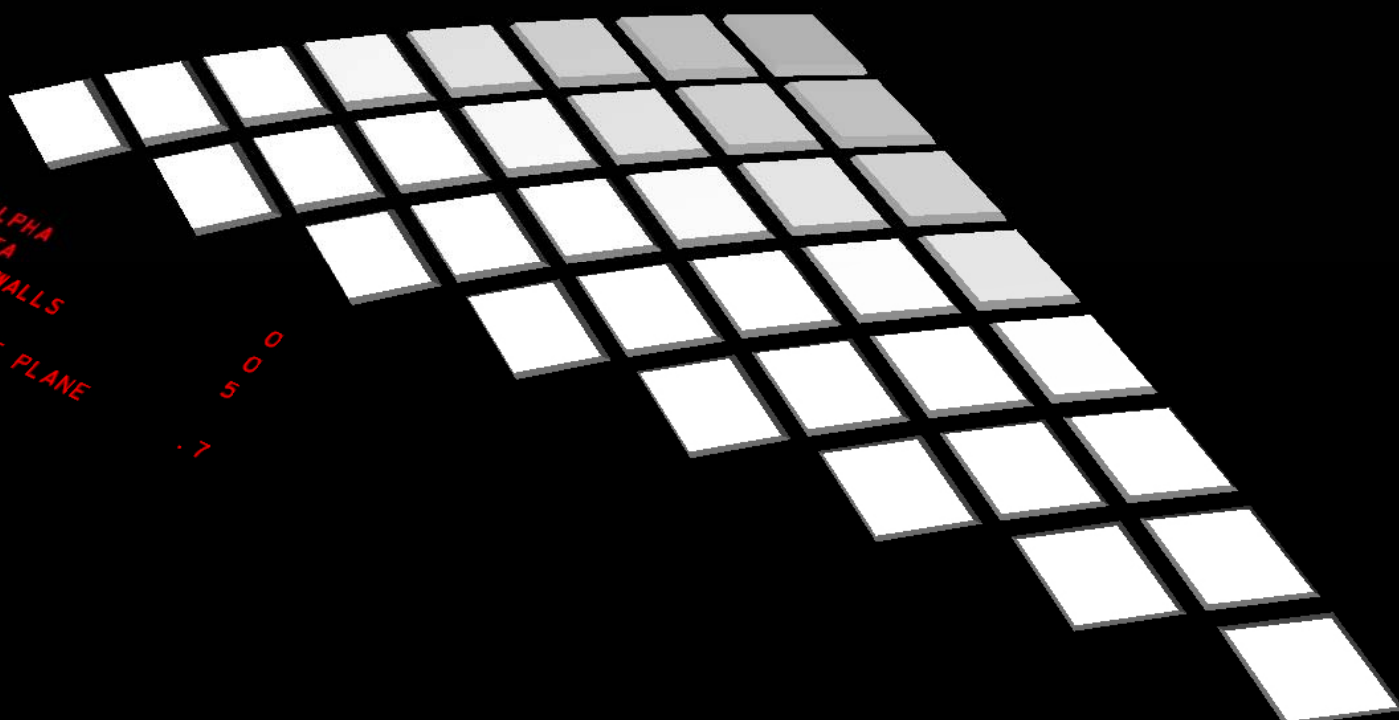
RCU-03 as shown in Definitivo design, providing natural ventilation

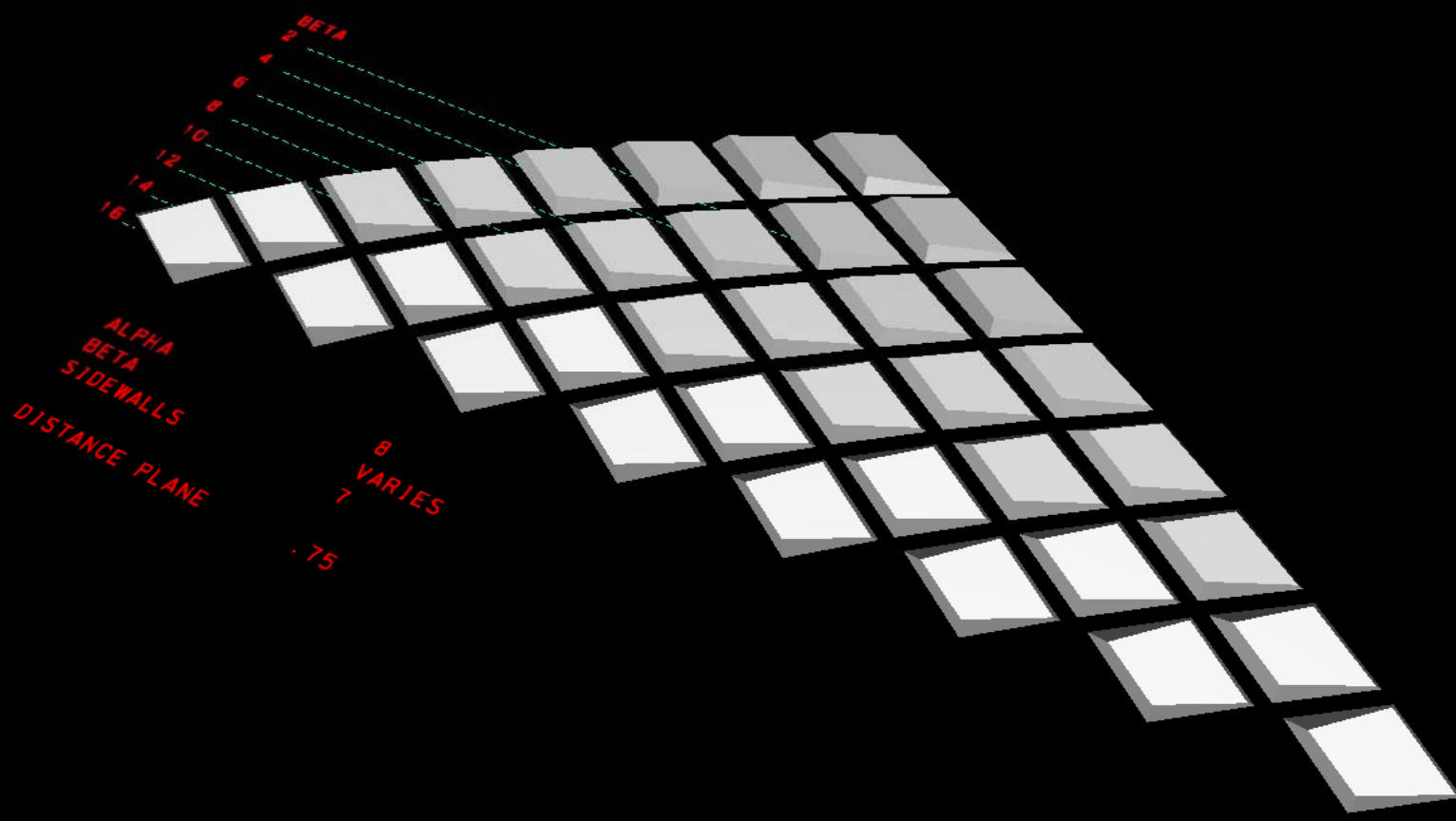




ALPHA
BETA
SIDEWALLS
DISTANCE PLANE

500
.7







**Translucent
Photovoltaic
Panels**

Solid Panel

**Transparent
Edges**

Lighting Concept

